



Rotating Vane Flow Meter for Liquids



measuring
•
monitoring
•
analysing

Model: DRH-...L



Model: ADI-K...



Model: DRH-...C



- Measuring ranges:
0.2 - 0.8 to 2.5 - 50 L/min water
- Measuring accuracy:
± 2.5 % f. s.
- pmax: 100 bar, tmax: 80 °C
- Connection:
G 3/8, G 1 female thread,
3/8 NPT, 1 NPT female thread
- Material:
brass, stainless steel,
POM, PVDF
- Viscosity range: low viscous
- Output:
pulses, 4 - 20 mA,
switching outputs



KOBOLD offices exist in the following countries:

ARGENTINA, AUSTRIA, BELGIUM, BRAZIL, CANADA, CHINA,
FRANCE, GERMANY, GREAT BRITAIN, ITALY, MEXICO, NETHER-
LANDS, PERU, POLAND, SWITZERLAND, USA, VENEZUELA

KOBOLD Messring GmbH
Nordring 22-24
D-65719 Hofheim/Ts.
☎ +49(0)61 92 299-0
Fax +49(0)61 92 233 98
E-Mail: info.de@kobold.com
Internet: www.kobold.com

Model:
DRH



Description

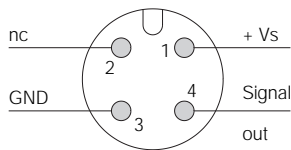
KOBOLD rotating vane flow meters series DRH are used for measuring and monitoring low viscous liquids. Series DRH flow meters are working according the well-known rotating vane principle. A magnet fitted in the vane and hermetically sealed from the medium transfers non-contacting the rotary motion to a Hall-effect sensor mounted in the housing. The sensor converts the rotary motion which is proportional to the flow to a frequency signal. A series-connected electronics unit converts the signal to an analogue output, limit contacts or display. This devices can be adapted to prevailing plant conditions with the 360° rotatable screw connections.

Fields of application

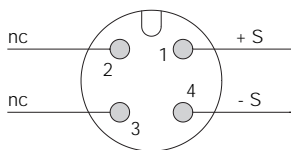
- cooling water monitoring
- agricultural machinery
- PCB board industry

Electrical connection

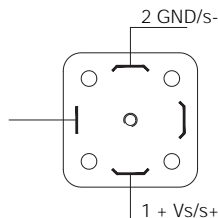
DRH-...F., DRH-...Z., DRH-...L3... 3-wire



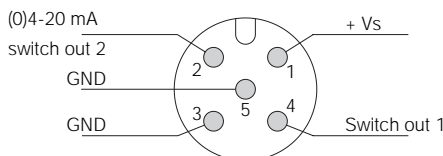
DRH-...L342... 2-wire



DRH-...L4...



DRH-...C...



Technical details

Material combinations: see order details
 Max. operating pressure: see order details
 Max. temperature: see order details
 Measuring accuracy: ± 2.5 % f. s.
 ± 5 % f. s. (DRH-...F300)
 Electrical connection: plug connector DIN 43 650,
 plug connector M12x1, cable
 Pressure loss: max. 1 bar at max. range
 Protection: IP 65

Electronics

- **Frequency output (...F300)**
 Power supply: 12 - 28 V_{DC}
 Power consumption: 10 mA
 Pulse output: PNP, open collector, max. 25 mA
 Electrical connection: plug connector M12x1
- **Frequency output with frequency divider**
 Power supply: 24 V_{DC} ± 20 %
 Power consumption: 15 mA
 Pulse output: PNP, open collector, max. 25 mA
 Electrical connection: plug connector M12x1
 Division ratio: 1...1/128, factory setting
- **Analogue output (plug-on display option)**
 Power supply: 24 V_{DC} ± 20 %
 Output: 0-20 mA or 4-20 mA,
 2-wire or 3-wire
 Max. load: 500 Ω
 Electrical connection: plug connector M12x1
 or DIN 43 650
 Option: plug-on display (with plug
 connector DIN 43 650 and
 output 4-20 mA only), 2-wire
- **Compact electronics**
 Display: 3-segment LED
 Analogue output: (0)4-20 mA adjustable. max. 500 Ω
 Switching outputs: 1 (2) semiconductor PNP or NPN,
 factory set
 Contact operation: N/C / N/O contact frequency
 programmable
 Setting: with 2 buttons
 Supply: 24 V_{DC} ± 20 %, 3-wire technology,
 approx. 100 mA
 Electrical connection: plug connector M12x1
- **Pointer indicator with analogue output**
 Housing: aluminum
 Display: moving-coil instrument,
 240° display
 Power supply: 24 V_{DC} ± 20 %
 Output: 4-20 mA or 0-20 mA, 3-wire
 Max. load: 250 Ω
 Electrical connection: plug connector M12x1



Order Details (example: DRH-1 1 05 N3 F300)

Measuring range L/min water	approx. frequency (Hz) at f.s.	Orifice diameter [mm]	Model	Connection		Evaluating electronics
				Standard fem. thread	Special fem. thread	
0.2-0.8	63	1	DRH-1 X 05..	..G3..=G 3/8	..N3..=3/8 NPT	<p>Frequency output ..F300=Frequency output, plug connector M12x1 ..F320=Frequency divider 1:2, plug connector M12x1 ..F340=Frequency divider 1:4, plug connector M12x1 ..F390=Frequency divider 1...¹/128 plug connector M12x1</p> <p>Analogue output ..L303=0-20 mA output, 3-wire, plug connector M12x1 ..L342=4-20 mA output, 2-wire, plug connector M12x1 ..L343=4-20 mA output, 3-wire, plug connector M12x1 ..L442=4-20 mA output, 2-wire, plug connector DIN 43 650</p> <p>Compact electronics* ..C30R=LED display, 2x open collector, PNP, plug con. M12x1 ..C30M=LED display, 2x open collector, NPN, plug con. M12x1 ..C34P=LED display, 4-20 mA, 1x open coll., PNP, plug con. M12x1 ..C34N=LED display, 4-20 mA, 1x open coll., NPN, plug con. M12x1</p> <p>Pointer indication* ..Z300=240° pointer indication, 0-20 mA, plug con. M12x1 ..Z340=240° pointer indication, 4-20 mA, plug con. M12x1</p>
0.2-2.0	50	2	DRH-1 X 10..	..G6..=G 1	..N6..=1 NPT	
0.3-2.8	123	2	DRH-1 X 15..	..G3..=G 3/8	..N3..=3/8 NPT	
0.25-5.0	78	3	DRH-1 X 20..	..G6..=G 1	..N6..=1 NPT	
0.5-6.0	166	3	DRH-1 X 25..	..G3..=G 3/8	..N3..=3/8 NPT	
0.5-15	145	5	DRH-1 X 30..	..G6..=G 1	..N6..=1 NPT	
1.0-16	225	5	DRH-1 X 35..	..G3..=G 3/8	..N3..=3/8 NPT	
1.0-26	240	7	DRH-1 X 40..	..G3..=G 3/8	..N3..=3/8 NPT	
2.0-36	218	8	DRH-1 X 45..	..G6..=G 1	..N6..=1 NPT	
2.5-50	220	10	DRH-1 X 50..	..G6..=G 1	..N6..=1 NPT	

*Please specify flow direction in writing

Material combinations (Please enter order code instead of **X** "model"; Example: DRH-1105 G1 F300)

Device parts	Oder code: 1	Oder code: 2	Oder code: 4	Oder code: 5	Oder code: 7	Oder code: 8	Oder code: 9
Housing	Brass, nickel-pl.	Brass, nickel-pl.	1.4404	1.4404	POM	POM	PVDF
Housing cover	PMMA	Brass, nickel-pl.	PMMA	1.4404	PMMA	POM	PVDF
Seal	NBR	NBR	FPM	FPM	NBR	NBR	FPM
Rotating vane	PTFE	PTFE	PTFE	PTFE	PTFE	PTFE	PTFE
Axle	Ceramic	Ceramic	Ceramic	Ceramic	Ceramic	Ceramic	Ceramic
Bearing	PTFE	PTFE	PTFE	PTFE	PTFE	PTFE	PTFE
p _{max} :	16 bar	100 bar	16 bar	100 bar	16 bar	16 bar	16 bar
t _{max} :	80 °C	80 °C	80 °C	80 °C	80 °C	80 °C	80 °C
Weight (3/8")	850 g	1000 g	900 g	1050 g	250 g	250 g	300 g
Weight (1")	1600 g	2000 g	1600 g	2000 g	400 g	400 g	500 g

Weight

Weight (sensor)
 + Weight (electronics)

 Total weight

Sensor Weight

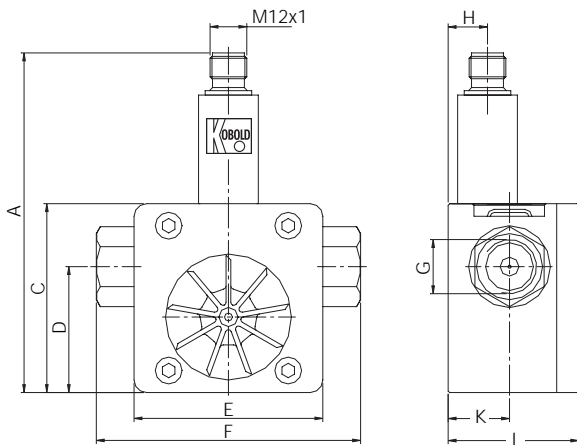
see material combination

Electronic Weight

Frequency output: app. 35 g
 Analogue output (...L3...): app. 35 g
 Analogue output (...L4...): app. 100 g
 Compact electronics: app. 650 g
 Pointer indication: app. 450 g

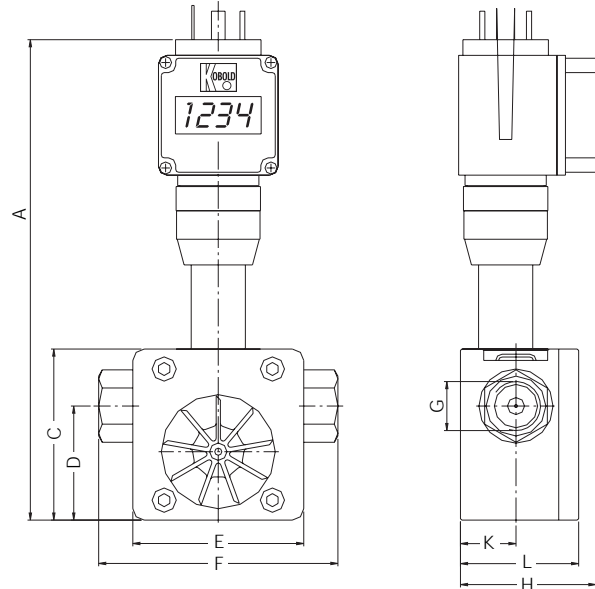
Dimensions

Model: DRH-F3..., DRH-...L (with analogue output)



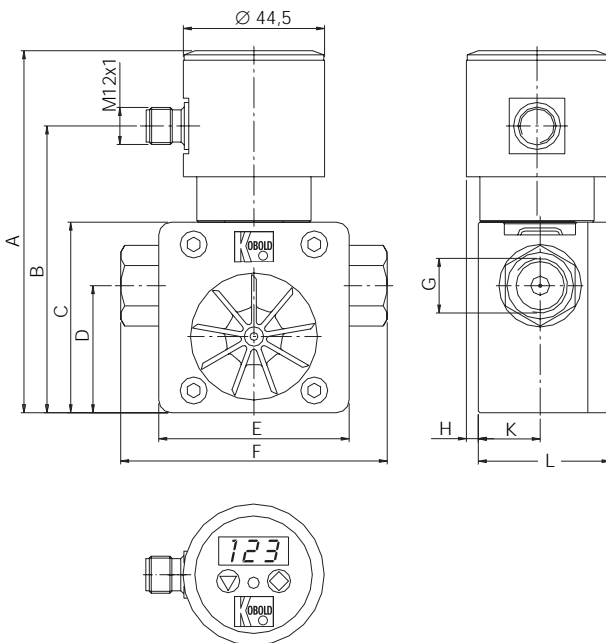
G	A	C	D	E	F	H	K	L
3/8	108	60	40	60	84	12.5	19.5	41.5
1	118	70	42	70	110	15.8	22.5	53

Model: DRH-...L442 (with analogue output and plug-on display)



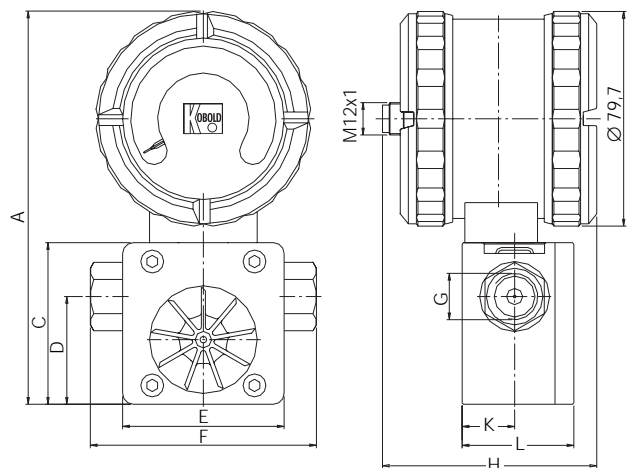
G	A	C	D	E	F	H	K	L
3/8	168.5	60	40	60	84	47.5	19.5	41.5
1	178.5	70	42	70	110	-	22.5	53

Model: DRH-...C (with compact electronics)



G	A	B	C	D	E	F	H	K	L
3/8	114	90.3	60	40	60	84	3.8	19.5	41.5
1	124	100.3	70	42	70	110	1.8	22.5	53

Model: DRH-...Z (with pointer indication)



G	A	C	D	E	F	H	K	L
3/8	146	60	40	60	84	79.6	19.5	41.5
1	156	70	42	70	110	79.6	22.5	53