

Miniature Incremental Rotary Encoder

Shaft model



- Max. speed: 12 000 rpm
- Shaft: Ø 4/6 mm
- Output: push-pull
- Cable connection: 2 m
- Pulse count: 50-1024 pulses
- Max. pulse frequency: 160 kHz
- Supply: 5-24 V_{DC}
- Max. temperature: +85 °C
- Protection type: IP 64



KOBOLD offices exist in the following countries:

**ARGENTINA, AUSTRIA, BELGIUM, BRAZIL, CANADA,
CHINA, COLOMBIA, FRANCE, GREAT BRITAIN, NETHERLANDS,
POLAND, SWITZERLAND, USA, VENEZUELA**

KOBOLD Messring GmbH
Nordring 22-24
D-65719 Hofheim/Ts.
☎ (06192) 299-0
Fax (06192) 23398
E-mail: info.de@kobold.com
Internet: www.kobold.com

Model:
ZDI-AW



Description

KOBOLD rotary encoders are used to measure length, position, rotational speed and angle. They convert mechanical motion to electrical signals. Incremental rotary encoders output a frequency signal which can represent speed, length or position.

A rotatable disc, on which a grating is attached, is mounted between an LED and a receiver. The light emitted from the LED is modulated by the grating and hits the receiver, which outputs a sinusoidal signal that is proportional to the light received. The sinusoidal signal is processed by specially designed electronics. Standard control systems - including all KOBOLD counters - require digital, square-wave signals at the input. Thus the signal is conditioned in the rotary encoder and is output through different output circuits depending on the field of application.

Areas of application

- Mounting technology
- Feeders and handling machines for electronic components
- Medical engineering (e.g. stirring machines)
- Inserting plant, letter opening machines
- Inspection platforms
- Labelling machines
- Pipe inspection machines (camera control)

Technical Details:

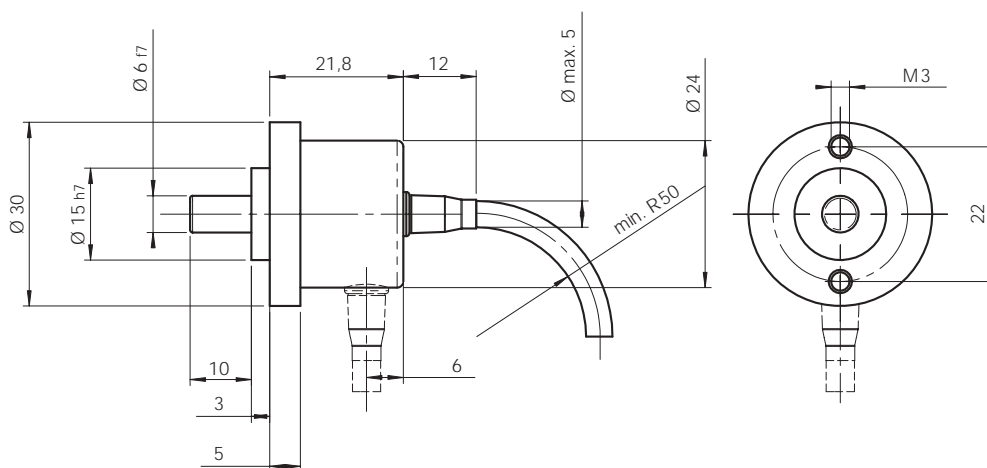
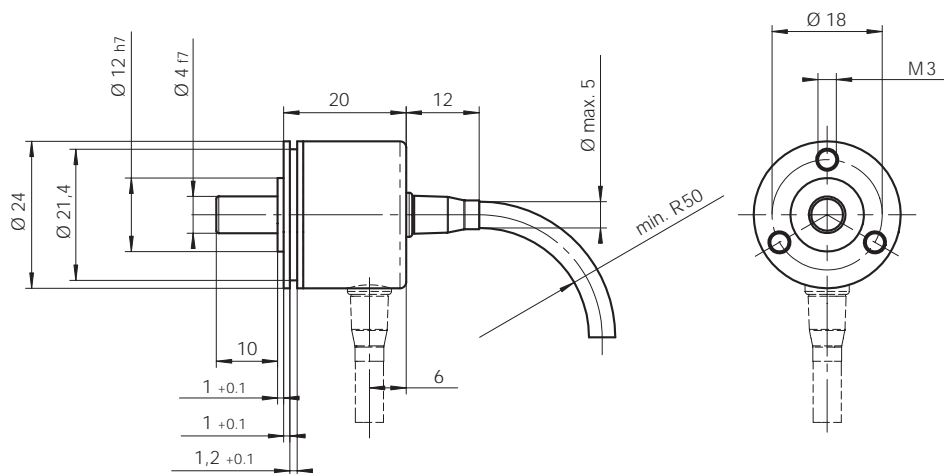
Max. speed:	12 000 rpm
Moment of inertia of rotor:	approximately 0.1×10^{-6} kgm ²
Initial torque:	< 0.001 Nm
Radial shaft loadability:	10 N
Axial shaft loadability:	15 N
Shaft:	Ø 4 mm or Ø 6 mm stainless steel
Flange connection:	Ø 24 mm or Ø 30 mm
Impact resistance:	1000 m/s ² , 6 ms
Vibration resistance:	100 m/s ² , 55-2000 Hz
Operating temperature range:	-20 to +85 °C
Working temperature range:	-20 to +90 °C
Output circuit:	push-pull with or without inversion short-circuit-proof
Electrical connection:	2 m cable axial or radial
Pulse count:	50 - 1024 pulses
Max. pulse frequency:	160 kHz
Supply:	5 - 24 V _{DC}
Current consumption:	max. 50 mA
Permissible load/channel:	max. 50 mA
Signal level high:	min. U _B - 2.5 V
Signal level low:	max. 0.5 V
Rise time/fall time:	max. 1 µs
Pulses per revolution:	50, 100, 200, 360, 500, 1000, 1024
Protection type:	IP 64 (case)
Weight:	approximately 0.06 kg

Order details (Example: **ZDI-AW 11 G 6 0050**)

Model	Description	Flange/shaft	Output circuit	Electrical connection	Pulse count (always use 4 digits)
ZDI-AW...	Incremental miniature rotary encoder - shaft model	11 = Ø 24 mm/ Ø 4 mm 22 = Ø 30 mm/ Ø 6 mm	G = push-pull without inversion H = push-pull with inversion	5 = 2 m cable, radial (standard) 6 = 2 m cable, axial (special)	0050, 0100, 0200, 0360, 0500, 1000, 1024



Dimensions



Please refer to our brochure Z2...



...for control units and relays