

covRguard® Gold

Blocks UV* emissions

GE Super Gold lamps provide maximum UV blockage and maintain protection for the entire life of the lamp, critical in the manufacturer of integrated circuits.

The exclusive sleeve is guaranteed not to deform or change color. These lamps provide more blockage than a gold phosphor lamp and block the critical G, H, and I lines. They are guaranteed to provide the same UV blocking over the life of the lamp. covRguard Gold also provides the following filters:

- UV-C light (200-280nm)
- UV-B light (280-315nm)

New T5 covRguard Gold

Now covRguard gold is available in the new 28 watt T5 version. Great for new installations where energy savings space considerations and optical control are critical needs.

Long Lamp Life

Same 20,000 – 24,000 hour life as our standard lamps, offering low lamp replacement and labor costs, increases productivity and reduces downtime.

More light

No need to sacrifice light output to get the UV and shatter protection you need. GE's Super Golds give you 35% higher lumens than the old phosphor gold lamps.

The Ultimate in Shatter Protection

GE's exclusive patented Lexan® polycarbonate gold lamp coverage from base to base eliminates light leakage at the lamp end, providing the industry's best overall UV protection. Unlike gold phosphor lamps or loose sleeves, Super Gold CovRguard is the ultimate protection for your critical UV sensitive processes.

No Assembly Required for Installation – Better Than Tube Guards and Caps

Super Gold CovRguard goes right into your fixture directly out of the box, saving you time and labor. Lexan polycarbonate Super Gold CovRguard eliminates the hazard of broken lamps when changing sleeves, protecting critical clean room environments from unwanted chemicals and contaminants. The CovRguard shield doesn't change the overall length of the lamp, preventing the potential of not fitting into the fixture and having poor pin contact.*



Applications:

Semi-conductor
Processing

Printing Applications

Photo Darkrooms

Food Processing



CovRguard®
Dependable
UV Blocking for all
photolithography
processes



imagination at work

Gold covRguard® Product Range

Description	Product Code	Life	Watts	Nominal Length	Initial Lumens	Carton Quantity
F28T5/GO/CVG	25768	20,000	28	45.2"	1986	40
F17T8/GO/ECO/CVG	25779	20,000	17	24"	970	24
F25T8/GO/ECO/CVG	25783	20,000	25	36"	1590	24
F32T8/GO/ECO/CVG	25784	20,000	32	48"	2280	36
F36T8/GO/CVG	81334	18,000	36	48"	2250	25
F58T8/GO/CVG	80053	18,000	58	60"	4080	25
F96T8/GO/CVG	25810	12,000	59	96"	4492	24
F40T12/GO/CVG	25850	20,000	40	48"	2510	30
F72T12/GO/CVG	25854	12,000	55	72"	4150	15
F96T12/GO/CVG	25852	12,000	75	96"	5640	15
F96T12/GO/HO/CVG	25853	12,000	110	96"	8010	15

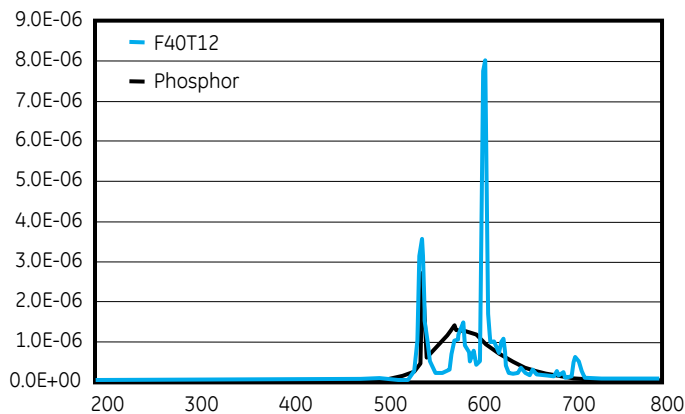
OSHA Bulletin:

*OSHA Hazard Information Bulletin, 19970715

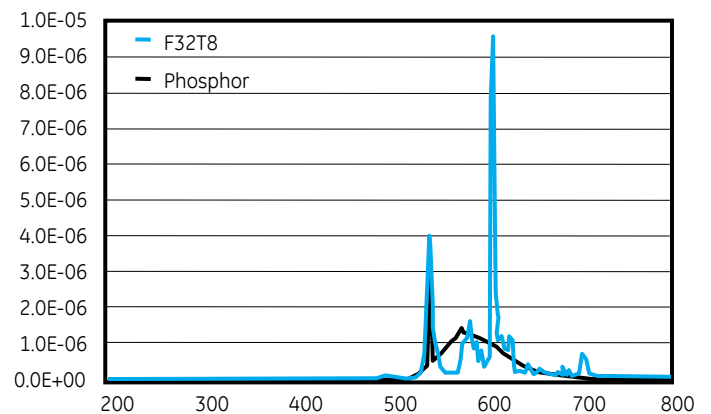
“Potential Fire with Fluorescent Light Bulbs within Plastic Tubes”

If sleeve and end cap or lamp are not properly installed, pins can heat up and melt the end caps, and then the sleeve, causing a fire

F40T12 Phosphor vs. F40T12 Gold CVG SPD



F32T8 Phosphor vs. F32T8 Gold CVG SPD



GE Gold covRguard lamps block more blue light than traditional gold phosphor lamps.

For additional product and application information, please consult GE's Website:
www.gelighting.com