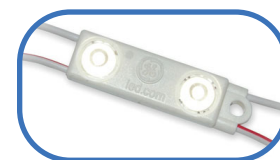


## Tetra® LED Systems

### Tetra® miniMAX



**Tetra miniMAX** delivers brilliant light in channel letters as shallow as 1.5in. The patent-pending OptiLens™ promotes wide, 155-degree viewing angle and superior uniformity in the smallest of channel letters.

**Applications** — small channel letters

**Available Colors** — white & warm white

**Packaging** — 100 ft./box

### Tetra® MAX



**Tetra MAX** is our LED system designed for the easiest possible installation and operation. We simplified the entire system by eliminating binning, load balancing and allowing off-the-shelf components saving time and material costs.

**Applications** — medium channel letters

**Available Colors** — red, green, blue, white & warm white

**Packaging** — 100 ft./box

### Tetra® CL



**Tetra CL** is up to 88% more energy efficient than standard neon, and is our most efficient LED system.

**Applications** — medium channel letters

**Available Colors** — red, red-orange & goldenrod

**Packaging** — 5 LED/ft.: 240 ft./spool  
6 LED/ft.: 200 ft./spool

### Tetra® Power White & Power White XL



**Tetra Power White & Tetra Power White XL** provides powerful performance in the biggest channel letter applications. This system provides brilliant white light across the entire sign face, filling every curve of the most demanding designs.

**Applications** — large channel letters and box signs

**Available Colors** — white & warm white

**Packaging** — Tetra Power White: 50 ft./spool; Tetra Power White XL (2 LED/ft.): 49.5 ft./spool;  
Tetra Power White XL (3 LED/ft.): 33 ft./spool

### Tetra® PowerGrid



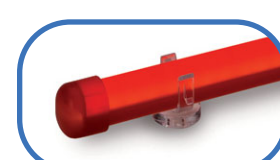
**Tetra PowerGrid** significantly reduces installation, maintenance and energy costs by replacing fluorescent lighting in backlighting applications.

**Applications** — box signs

**Available Colors** — white & warm white

**Packaging** — 21 modules/box

### Tetra® Contour LS



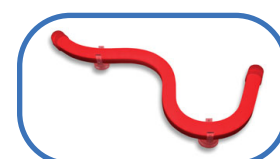
**Tetra Contour LS** is our linear neon replacement system that comes pre-assembled and ready-to-install; perfect for long run border lighting applications.

**Applications** — border lighting and accent lighting

**Available Colors** — red, green, blue & white

**Packaging** — 48 ft./box

### Tetra® Contour



**Tetra Contour** is our two-part neon replacement system that can be easily heated and formed into custom shapes and designs.

**Applications** — neon replacement and accent lighting

**Available Colors** — Light Engine: red, red-orange, amber, green, blue, white & warm white  
Light Guide: red, orange, yellow, lime green, green, blue & white

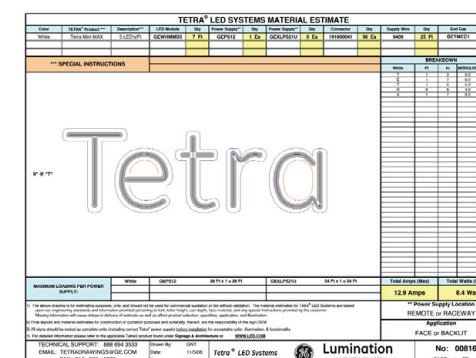
**Packaging** — Tetra Contour light engines: red: 96 ft./box; other colors: 48 ft./box  
Tetra Contour light guides: 96 ft./box

## Tetra® Power Supplies

SKU	Description	Supports Tetra Products	Minimum Load	Maximum Load
GECLPS3	Damp-Rated; Self-Contained, Remote, or Raceway; 4 Output Banks; Class 2 Power Supply; Input Voltage: 90-264	<b>Tetra CL (5 LED/ft.)</b> <b>Tetra CL (6 LED/ft.)</b>	4 ft. (20 Modules) 3.25 ft. (20 Modules)	76 ft. (384 Modules) 64 ft. (384 Modules)
GECLPS4	Damp-Rated; Self-Contained, Remote, or Raceway; 1 Output Bank; Class 2 Power Supply; Input Voltage: 90-264	<b>Tetra CL (5 LED/ft.)</b> <b>Tetra CL (6 LED/ft.)</b>	1 ft. (5 Modules) 10 in. (5 Modules)	19 ft. (96 Modules) 16 ft. (96 Modules)
GEPS12-20	Damp Rated; Self-Contained, Remote or Raceway; 1 Output Bank; Class 2 Power Supply; Input Voltage: 90-264VAC	<b>Tetra MAX</b> <b>Tetra MAX (only GERDMXL6)</b> <b>Tetra miniMAX</b>	1 ft. (3 Modules) 1 ft. (3 Modules) 1 ft. (3 Modules)	17 ft. (51 Modules) 26 ft. (52 Modules) 12 ft. (30 Modules)
GEPS12-60	Damp Rated; Self-Contained, Remote or Raceway; 1 Output Bank; Class 2 Power Supply; Input Voltage: 90-264VAC	<b>Tetra MAX</b> <b>Tetra MAX (only GERDMXL6)</b> <b>Tetra miniMAX</b>	1 ft. (3 Modules) 1 ft. (3 Modules) 1 ft. (3 Modules)	54 ft. (162 Modules) 80 ft. (240 Modules) 36 ft. (90 Modules)
GEPS12-60U	Damp Rated; Self-Contained, Remote or Raceway; 1 Output Bank; Class 2 Power Supply; Input Voltage: 108-305VAC	<b>Tetra MAX</b> <b>Tetra MAX (only GERDMXL6)</b> <b>Tetra miniMAX</b>	1 ft. (3 Modules) 1 ft. (3 Modules) 1 ft. (3 Modules)	54 ft. (162 Modules) 80 ft. (240 Modules) 36 ft. (90 Modules)
GECLPSPH	Damp-Rated; Self-Contained, Remote, or Raceway; 4 Output Banks; Class 2 Power Supply; Input Voltage: 90-265	<b>Tetra Power White</b>	4 ft. (8 Modules)	34 ft. (68 Modules)
GEXLPS21	Damp Rated; Self-Contained, Remote or Raceway; 1 Output Bank; Class 2 Power Supply; Input Voltage: 108-265	<b>Tetra Power White XL</b> <b>Tetra Power White XL (3 LED/ft.)</b>	4.5 ft. (9 Modules) 3 ft. (9 Modules)	25.5 ft. (51 Modules) 17 ft. (51 Modules)
GEXLPS21-U	Damp Rated; Self-Contained, Remote or Raceway; 1 Output Bank; Class 2 Power Supply; Input Voltage: 108-305	<b>Tetra Power White XL</b> <b>Tetra Power White XL (3 LED/ft.)</b>	4.5 ft. (9 Modules) 3 ft. (9 Modules)	25.5 ft. (51 Modules) 17 ft. (51 Modules)
GEPS24-20	Damp Rated; Self-Contained, Remote or Raceway; 1 Output Bank; Class 2 Power Supply; Input Voltage: 90-264VAC	<b>Tetra PowerGrid</b> <b>Tetra Contour</b> <b>Tetra Contour LS</b>	1 module 16 in. 8 in.	5 modules 6 ft. 6 ft.
GEPS24-80	Damp Rated; Self-Contained, Remote or Raceway; 1 Output Bank; Class 2 Power Supply; Input Voltage: 108-264VAC	<b>Tetra PowerGrid</b> <b>Tetra Contour</b> <b>Tetra Contour LS</b>	1 module 16 in. 8 in.	14 ft. (21 Modules) 24 ft. 24 ft.
GEPS24-100U	Damp Rated; Self-Contained, Remote or Raceway; 1 Output Bank; Class 2 Power Supply; Input Voltage: 108-305VAC	<b>Tetra PowerGrid</b> <b>Tetra Contour</b> <b>Tetra Contour LS</b>	1 module 16 in. 8 in.	24 modules 30 ft. 30 ft.

## Technical Support

Our comprehensive in-house resources include installer training, technical drawings, energy calculation tools and private testing labs to ensure every product we sell meets stringent standards of excellence you can depend on. For more information visit us at [www.led.com](http://www.led.com) or call us at **1-888-MY-GE-LED**



6180 Halle Drive • Valley View, Ohio 44125-4635 • USA  
P: 216.606.6555 • F: 216.606.6599 • [www.led.com](http://www.led.com) • [info@led.com](mailto:info@led.com)

For customer service & technical support, contact:  
**1-888-MY-GE-LED** (1.888.694.3533)

Lumination, LLC is a subsidiary of the General Electric Company. Tetra and OptiLens are trademarks of Lumination LLC. The GE brand, logo, and e:imagination are trademarks of the General Electric Company. © 2008 Lumination, LLC. Information provided is subject to change without notice. All values are design or typical values when measured under laboratory conditions.

GE  
Lumination

# 2009 Tetra® LED Systems



imagination at work

# Tetra® Quick Reference Guide

## Power Supplies/Components

PRODUCT LINE	TARGET APPLICATION	APPLICATION DIMENSIONS	SKU	LED COLOR	WAVELENGTH/ COLOR TEMPERATURE	LEDs PER MODULE	MODULES PER FOOT	VIEWING ANGLE	LUMENS PER MODULE (Typical)	LUMENS PER FOOT (Typical)	LIMITED WARRANTY	LED STRIP (Typical) POWER CONSUMPTION WATTS/MODULE	LED SYSTEM (Typical) POWER CONSUMPTION WATTS/MODULE	MODULE DIMENSIONS H x W x L (INCHES)	CUT RESOLUTION	POWER SUPPLY	SUPPLY WIRE	WIRE CONNECTOR	END CAP
Tetra miniMAX	Channel Letters	0.5 in. Min. Stroke Width	GEWMMMS5	Warm White	3200K	2	2.5	155	20	50	4 year	0.624	0.749	0.38 x 0.44 x 2.13	Between every module	GEPS12-60, GEPS12-60U or GEPS12-20	9409 (18 AWG)	IDC Connector (192160005) or Twist-on Connector (191600041)	N/A
		1.5 in. Min. Depth	GEWHMMS5	White	6500K	2	2.5	155	24	60	4 year	0.624	0.749	0.38 x 0.44 x 2.13	Between every module				
Tetra MAX	Channel Letters	0.75 in. Min. Stroke Width	GERDMS6	Red	625 nm	2	3	100	7	21	5 year	0.330	0.400	0.50 x 0.63 x 2.06	Between every module	GEPS12-60, GEPS12-60U or GEPS12-20	9409 (18 AWG)	IDC Connector (192160004) or Twist-on Connector (191600041)	GETMEC1
			GEGLMS6	Green	530 nm	2	3	100	14	42	3 year	0.330	0.400	0.50 x 0.63 x 2.06	Between every module				
		GEBLMS6	Blue	467 nm	2	3	100	4	12	3 year	0.330	0.400	0.50 x 0.63 x 2.06	Between every module					
		GEWWMXS6	Warm White	3200K	2	3	110	12	36	4 year	0.330	0.400	0.50 x 0.63 x 2.06	Between every module					
		GEWHMXS6	White	6500K	2	3	105	14	42	4 year	0.330	0.400	0.50 x 0.63 x 2.06	Between every module					
		GERDML6	Red	625 nm	3	2	100	11	21	5 year	0.330	0.400	0.56 x 0.69 x 4.06	Between every module					
Tetra CL	Channel Letters	1 in. Min. Stroke Width	GERDCLS5	Red	626 nm	1	5	90	4	21	5 year	0.125	0.174	0.31 x 0.88 x 1.13	Between every module	GECLPS3 or GECLPS4	GECLSW1 (14 AWG)	GECLSC2	GECLEC1
			GERDCLSWA5	Red (Wide Angle)	622 nm	1	5	140	3	13	5 year	0.125	0.174	0.31 x 0.88 x 1.13	Between every module				
		GERCCLS5	Red-Orange	618 nm	1	5	90	5	25	5 year	0.125	0.174	0.31 x 0.88 x 1.13	Between every module					
		GEYGCLS5	Goldenrod	595 nm	1	5	90	3	13	5 year	0.125	0.174	0.31 x 0.88 x 1.13	Between every module					
		GERDCLS1	Red	626 nm	1	6	90	4	25	5 year	0.125	0.174	0.31 x 0.88 x 1.13	Between every module					
		GERDCLSWA1	Red (Wide Angle)	622 nm	1	6	140	3	15	5 year	0.125	0.174	0.31 x 0.88 x 1.13	Between every module					
		GERCCLS1	Red-Orange	618 nm	1	6	90	5	30	5 year	0.125	0.174	0.31 x 0.88 x 1.13	Between every module					
		GEYGCLS1	Goldenrod	595 nm	1	6	90	3	15	5 year	0.125	0.174	0.31 x 0.88 x 1.13	Between every module					
Tetra Power White & Tetra Power White XL	Channel Letters	1.25 in. Min. Stroke Width	GEWHPHS2-65K	White	6500K	1	2	120	66	132	4 year	1.013	1.432	0.60 x 1.18 x 1.65	Between every module	GECLPSPH	GECLSW1 (14 AWG)	GECLSC2	GECLEC1
			GEWHXHS2-65K	White	6500K	1	2	120	66	132	4 year	0.984	1.171	0.60 x 1.18 x 1.65	Every 3 modules				
		GEWXXHS2-32K	Warm White	3200K	1	2	120	48	96	4 year	0.984	1.171	0.60 x 1.18 x 1.65	Every 3 modules					
		GEWXXHS3-32K	Warm White	3200K	1	3	120	48	144	4 year	0.984	1.171	0.60 x 1.18 x 1.65	Every 3 modules					
Tetra PowerGrid	Backlit Box Signs	5 in. Min. Depth	GEWHPGP6-65K	White	6500K	6		120	126		4 year	3.6	4.2	0.56 x 9.25 x 6.19	Between every module	GEPS24-20, GEPS24-80 or GEPS24-100U	9409 (18 AWG)	IDC Connector (192160004) or Twist-on Connector (191600041)	GEPGEC1
			GEWXP6-35K	Warm White	3500K	6		120	102		4 year	3.6	4.2	0.56 x 9.25 x 6.19	Between every module				
Tetra Contour LS	Border Lighting	15mm neon replacement	GERDXNLA2-RD	Red	625 nm			330		40	5 year	3.24	3.81	0.44 x 0.44 x 8.0	Cut between modules (8.00 in.)	GEPS24-20, GEPS24-80 or GEPS24-100U	9409 (18 AWG)	Twist-on Connector (191600041)	N/A
			GEGLXNLA2-GL	Green	532 nm			330		80	3 year	2.88	3.39	0.44 x 0.44 x 8.0	Cut between modules (8.00 in.)				
			GEBLXNLA2-BL	Blue	467 nm			330		20	4 year	2.88	3.39	0.44 x 0.44 x 8.0	Cut between modules (8.00 in.)				
			GEWHXNLA2-WH	White	6500K			330		74	4 year	2.88	3.39	0.44 x 0.44 x 8.0	Cut between modules (8.00 in.)				
			GERDXNAA2-RD	Red	625 nm			330		40	5 year	3.24	3.81	0.44 x 0.44 x 16.0	On "Cut Here" markings (2.67 in.)				
			GEGLXNAA2-GL	Green	532 nm			330		80	3 year	2.88	3.39	0.44 x 0.44 x 16.0	On "Cut Here" markings (2.00 in.)				
			GEBLXNAA2-BL	Blue	467 nm			330		20	4 year	2.88	3.39	0.44 x 0.44 x 16.0	On "Cut Here" markings (2.00 in.)				
			GEWHXNAA2-WH	White	6500K			330		74	4 year	2.88	3.39	0.44 x 0.44 x 16.0	On "Cut Here" markings (2.00 in.)				
Tetra Contour*	Border & Accent Lighting	15mm neon replacement	GERDXNLE1	Red	625 nm			330		40	5 year	3.24	3.81	0.44 x 0.44 x 16.25	On "Cut Here" markings (2.67 in.)	GEPS24-20, GEPS24-80 or GEPS24-100U	9409 (18 AWG)	Twist-on Connector (191600041)	N/A
			GERCXNLE1	Red-Orange	618 nm			330		32	5 year	3.24	3.81	0.44 x 0.44 x 16.25	On "Cut Here" markings (2.67 in.)				
			GEYAXNLE1	Amber	589 nm			330		30	5 year	3.24	3.81	0.44 x 0.44 x 16.25	On "Cut Here" markings (2.67 in.)				
			GEGLXNLE1	Green	532 nm			330		80	3 year	2.88	3.39	0.44 x 0.44 x 16.25	On "Cut Here" markings (2.00 in.)				
			GEBLXNLE1	Blue	467 nm			330		20	4 year	2.88	3.39	0.44 x 0.44 x 16.25	On "Cut Here" markings (2.00 in.)				
			GEWXXNLE1	Warm White	3200K			330		63	3 year	2.88	3.39	0.44 x 0.44 x 16.25	On "Cut Here" markings (2.00 in.)				
			GEWHXNLE1	White	6500K			330		74	4 year	2.88	3.39	0.44 x 0.44 x 16.25	On "Cut Here" markings (2.00 in.)				

\* For light guides and accessories, reference the Tetra Contour Component Guide