



Cable Harness Tester

QUICK START GUIDE



TEST MORE. TEST FASTER. TEST FOR LESS.

Cable Harness Tester

Quick Start Guide

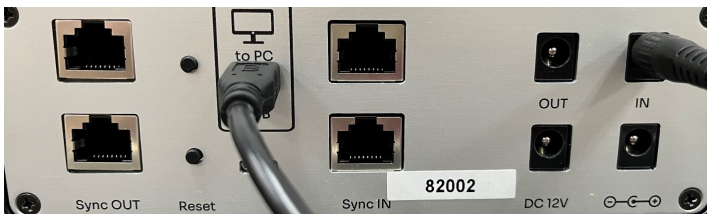
1 Required Items

Please make sure following items are available to use **Cable Harness Tester** :

- Cable Harness Tester
- USB Cable
- Harness Tester PC Application
- Windows PC (Windows 7 and above)
- Power Supply Adapter (12VDC,5A)

2 Hardware Setup

- Connect the USB cable between Cable Harness Tester and PC.
- Connect 12VDC power adapter to Cable Harness Tester



3 Application Setup

- Download the “**Release.rar**” zip folder to the working directory of windows and extract that into the same folder.

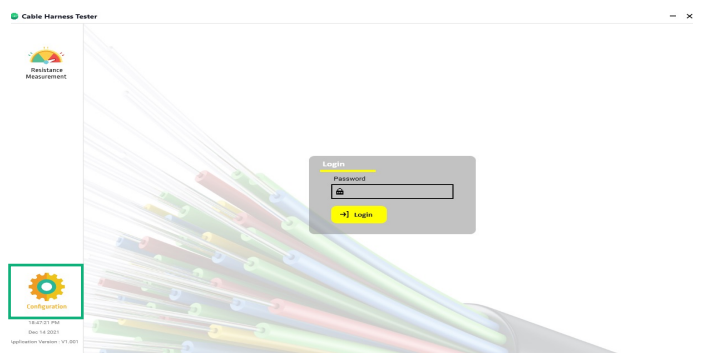
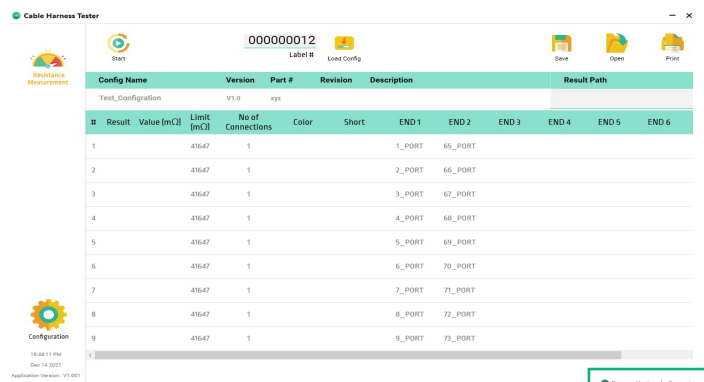
> Teq Projects > Aug-2021 > RUM_512_Ch_brd > Lalit_Work > cable_harness_beta > chtapp_beta > CableHarnessApp > bin > Release

Name	Date modified	Type	Size
Database	15-12-21 02:25 PM	File folder	
x64	13-12-21 07:43 PM	File folder	
x86	13-12-21 07:43 PM	File folder	
CableHarnessApp.Common.dll	11-12-21 07:24 PM	Application exten...	26 KB
CableHarnessApp.Common.dll	03-12-21 09:46 AM	XML Configuratio...	2 KB
CableHarnessApp.Common.pdb	11-12-21 07:24 PM	Program Debug D...	58 KB
CableHarnessApp	11-12-21 07:24 PM	Application	8,907 KB
CableHarnessApp.exe	03-12-21 09:46 AM	XML Configuratio...	3 KB
CableHarnessApp.Model.dll	11-12-21 07:24 PM	Application exten...	12 KB
CableHarnessApp.Model.pdb	11-12-21 07:24 PM	Program Debug D...	60 KB
CableHarnessApp.pdb	11-12-21 07:24 PM	Program Debug D...	330 KB
CableHarnessApp.Repository.dll	11-12-21 07:24 PM	Application exten...	21 KB

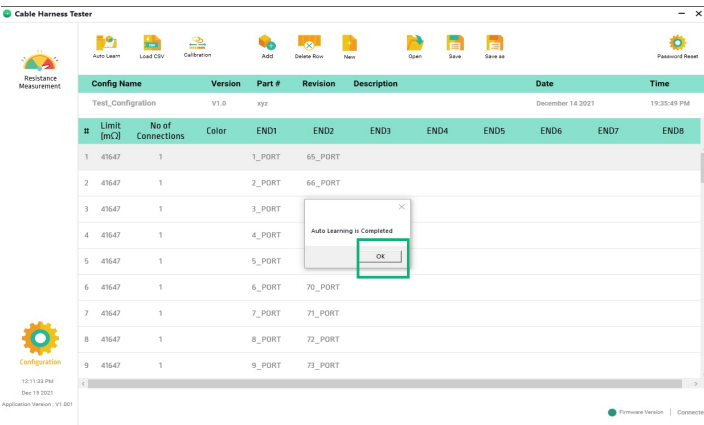
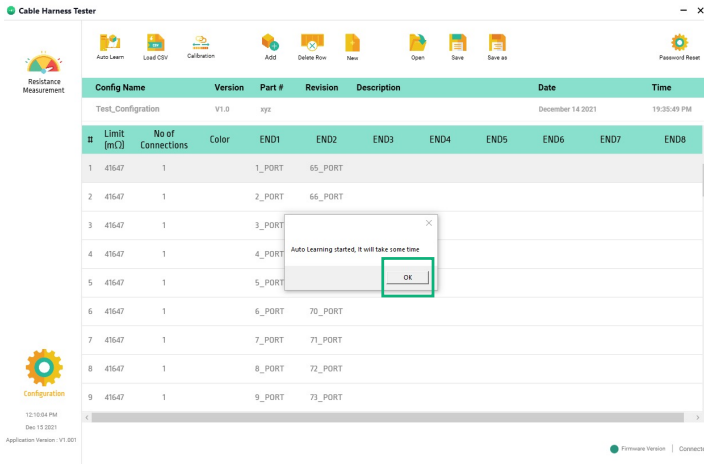
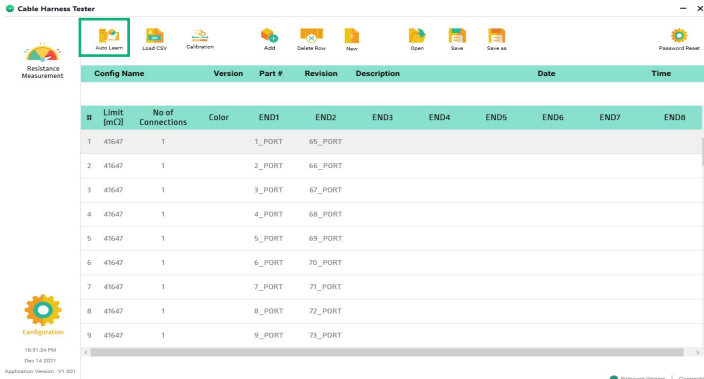
- Click on the Green Color “Cable Harness App” icon to open the AEM Cable Harness Tester PC Application
- Upon successful initialization of Application, Application shows GREEN LED for Firmware version and shows “Connected” status at the bottom status bar of application

4 Running the Application

- Click “**Configuration**” in the left end side of the application
- Login page will open
- Enter “**teq**” as password and press “Login”

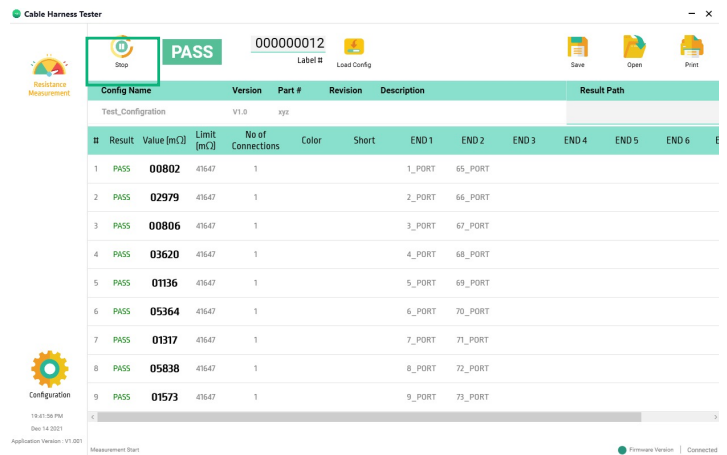
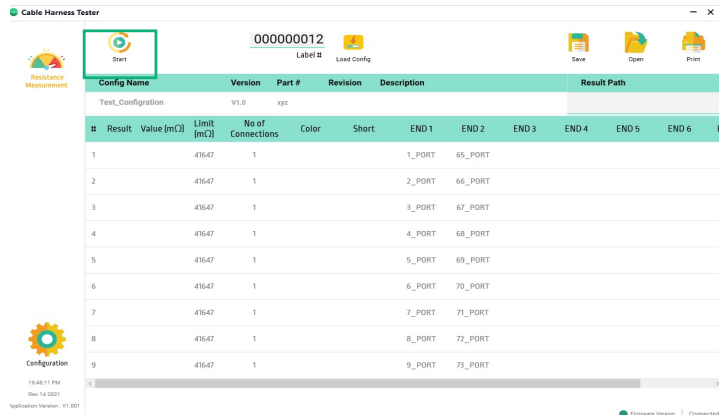
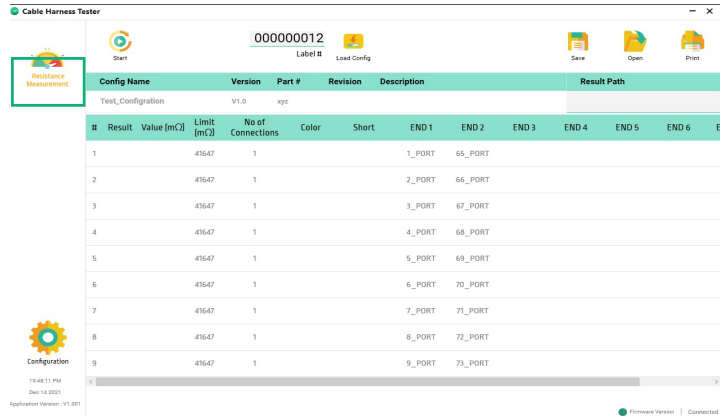


- Connect Cable Harness Tester
- Click “**Autolearn**”
- Press “**OK**”
- Wait for 20 seconds for Autolearn to complete
- Press “**OK**” and cable map is generated successfully



- Click “Resistance Measurement”
- Click “Start” to initiate the resistance measurement

- Click “Stop” to stop the resistance measurement and view the results



Cable Harness Tester

Quick Start Guide

Notes/Serial Numbers :



Technical Support

Live Phone Support :

Monday - Friday | 8am-5pm (Arizona,USA)
T : 480-534-1232
Toll Free : 833-572-6916

Email Monitored 24hrs
customercare@aem-test.com

Create an account at
www.AEM-Test.com/myaccount

Use MyAccount portal to :

- Submit a technical support request and track status
- Submit a product repair request
- Register your products (upon product registration, receive link to free on-demand training modules)
- Register your Extended Care contract and see status
- Download firmware updates
- Access Knowledge Base

For more information and details specifications,
please visit: AEM-Test.com/cableharnesstester

AEM International, Ltd.
5560 West Chandler Blvd. Ste.3
Chandler, Arizona 85226
T : 480-531-1232

AEM Singapore Pte. Ltd.
52 Serangoon North Ave 4
Singapore 555853
T : +65 6483 1811
F: +65 6483 1822



WWW.AEM-TEST.COM

customercare@aem-test.com | Version 1.0