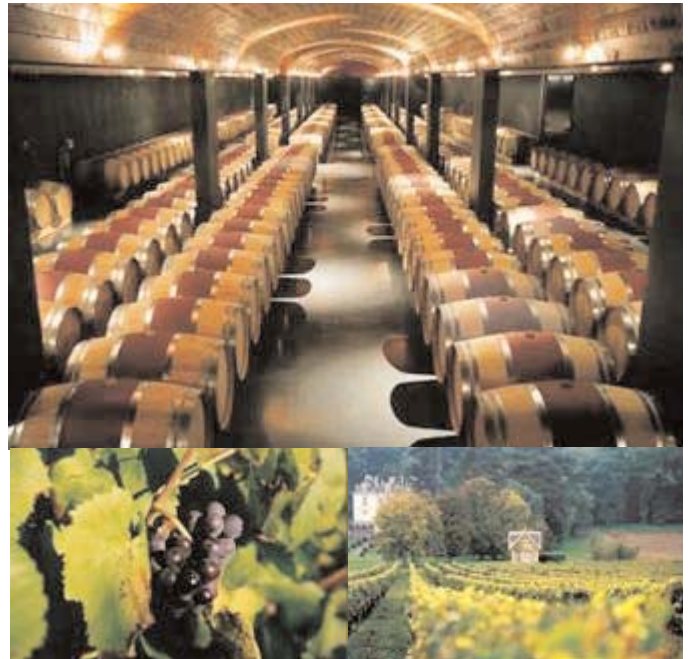




## NewPXG WINE Temperature Controller



In cooperation with the oenology consulting firm, the oenology department of FUJI ELECTRIC has developed for you the new temperature controller PXG WINE.

Earning the high quality wine vinificators, the international group FUJI ELECTRIC have introduced his knowledge in electronic industry to serve the oenology.

### **PXG WINE by Fuji Electric**

PT100 Input  
 2 independent Heat and Cool Relay Outputs,  
 1 Relay output for remouting function (with timer),  
 1 Relay output for Micro-Oxygenation function (with timer),  
 24V AC/CC (85-240V in option),  
 Modbus Communication,  
 Digital input for external management..

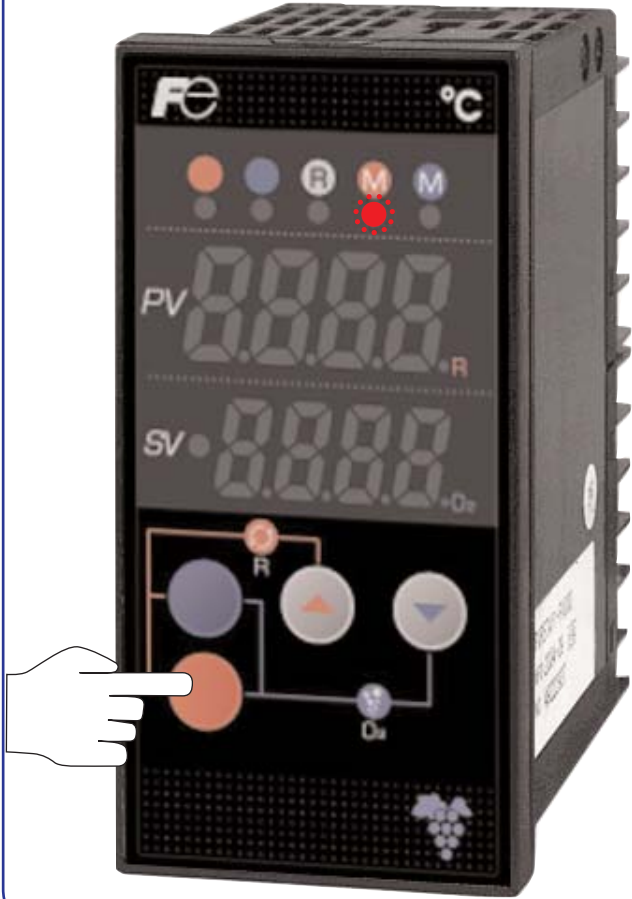


### **Fuji Electric France S.A.**

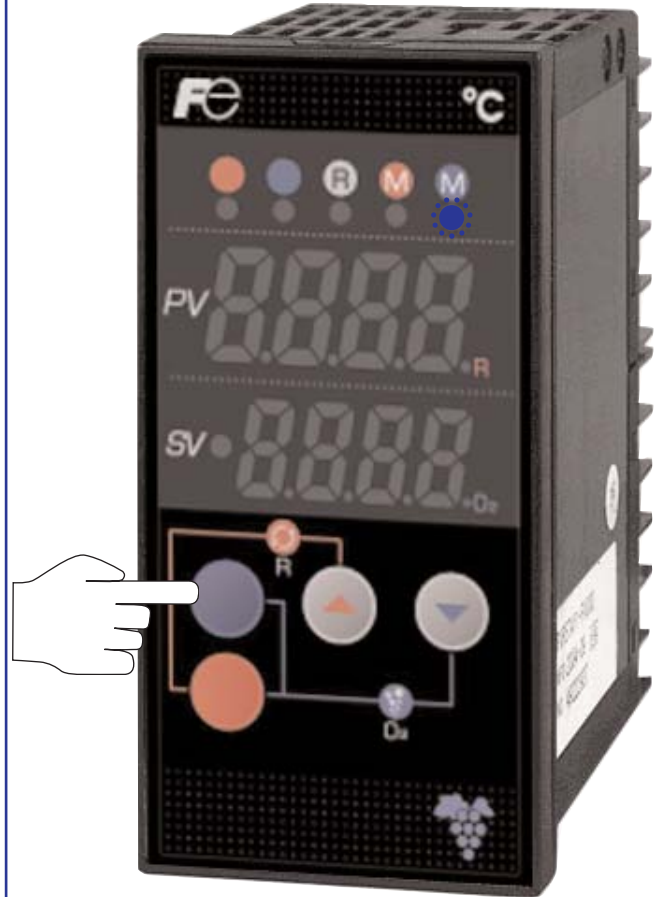
46,Rue Georges Besse-ZI du Brézet 63039 Clermont-Ferrand CEDEX 2 . FRANCE .  
 Tel. (33) 04 73 98 26 98 . Fax (33) 04 73 98 26 99  
 S.A. au capital de 30 000 000 F . RCS Clermont-Ferrand . Siret : B 400 841 680 000 20 . APE 332 B



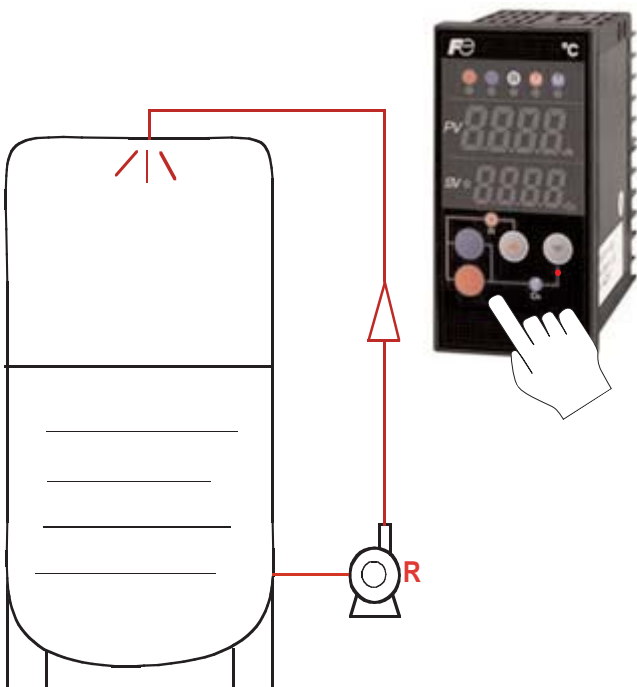
**Heat Mode (Inactive Cool output)**



**Cool Mode (Inactive heat output)**



**Remounting function**



**Micro-oxygenation function**

