

SET-UP & START-UP

Ro-Tap® RX MODELS

Installation

The sieve shakers (**Ro-Tap**® Models RX-29 & RX-30 & Coarse Model RX-812) must be mounted on a **Ro-Tap**® Test Stand (R-40041), concrete foundation or heavy bench capable of supporting 200 lbs. Moderate tension of the mounting bolts is all that is required.

Basic Operation

A) Ro-Tap®

Assemble a stack of sieves, beginning with the top cover, the coarsest (largest) sieve opening on top, with a pan on the bottom. Place the stack into the shaker, with the hammer tilted up and out of the way. Place the **Ro-Tap**® sieve cover, with the plug installed, on top of the sieve stack. The sieve support clamp bar is then adjusted, by loosening/tightening the two adjustable handles. Press the yellow buttons and turn handles in the appropriate direction. Bring the top of the Ro-Tap® sieve cover flush with the top of the upper carrying plate.

NOTE: Some force may be required to move the support clamp bar on the **Ro-Tap**® II (RX-94). This is due to the resistance of the gas safety spring.

B) Coarse Sieve Shaker

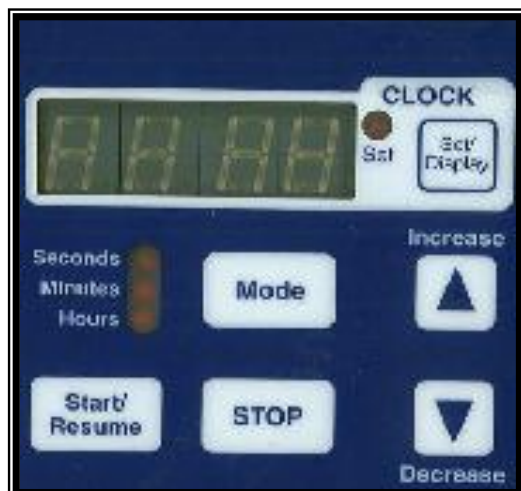
Assembly of the sieve stack is the same as with the **Ro-Tap**®. The clamping assembly is adjusted from the top down by screwing the two knobs down on the threaded clamp bars.

Starting the Shaker (Timer Function)

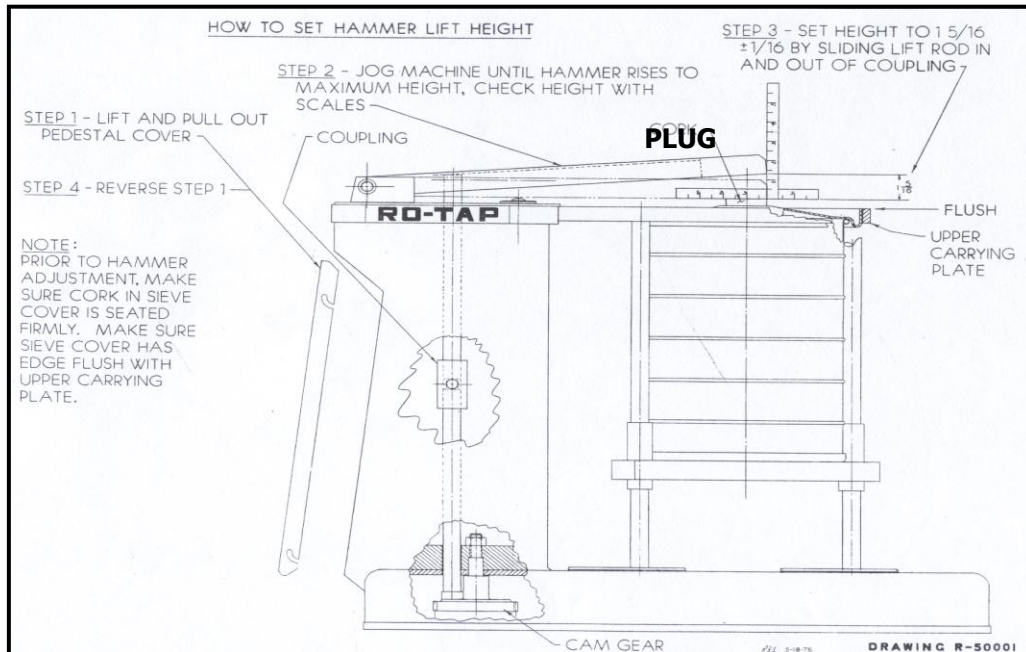
Make sure a sieve stack is in place at the time. To set the test run time, set the test duration by pushing the increase button until the desired time appears in the digital window. Push the start button to begin the test. An audible tone will be heard at the end of the test.

Should you wish to stop or interrupt the test at any time, simply push the stop button. Note that the remaining test time is frozen on the readout. To continue, simply push the start button. Once a test is complete, if you wish to repeat the prior process, simply push the start button. The most recent time will remain in memory.

NOTE: The timing device also has a clock function. To use this option, hold the "clock" set/display button and adjust the proper time with the increase/decrease buttons.



HAMMER DROP ADJUSTMENT



SETTING THE HAMMER LIFT HEIGHT

Ro-Tap® MODELS: RX-29 and RX-30 and RX-94

(NOTE: THIS SETTING HAS BEEN MADE ON ALL NEW UNITS)

NOTE: Prior to hammer adjustment; make sure plug is seated firmly in sieve cover. Make sure sieve cover has top edge flush with upper carrying plate. A stack of sieves must be used to achieve this setting.

STEP 1: Remove pedestal cover.

STEP 2: Jog machine until hammer rises to maximum height or use a box wrench on the hex head screw, located on top of the pedestal. Check height with scales.

STEP 3: Set height to $1\frac{5}{16} \pm \frac{1}{16}$ " by loosening screw on coupling and adjusting lift rod.

STEP 4: Tighten screw on coupling.

STEP 5: Replace pedestal cover.

Lubrication

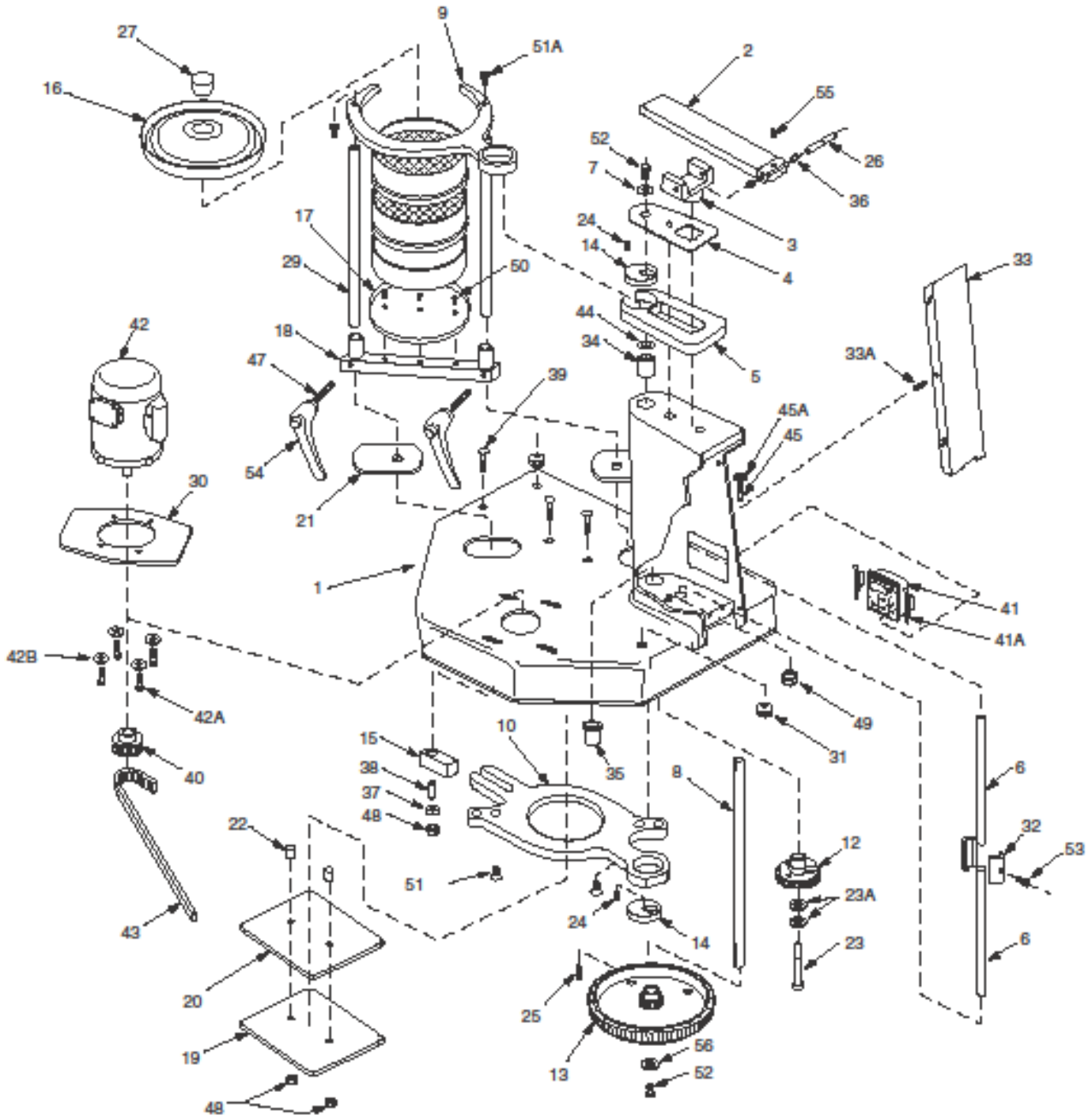
The Tyler Sieve Shakers require only minimal periodic lubrication. The units incorporate plastic and oil-impregnated bronze bearing materials, which are self-lubricating. A few drops of light oil or WD-40™ every six months is all that is necessary to prevent drying of the parts. Application of the same lubricants will suffice if a squeak or a drag should develop in the mechanism.

PLEASE BE ADVISED: Review these warnings prior to use

WARNING	
E	Before removing cover set timer to zero and disconnect the power!
D	Vor Öffnung der Maschine Zeitschaltuhr auf 0 stellen und Netzstecker ziehen!
F	Tableau indicateur: Avant l'ouverture de la machine veuillez régler la minuterie à 0 et retirer la fiche de contact!
S	Advertencia: Ponga el marcador en zero y desconecte la electricidad antes de quitar la tapa!

! WARNING
DO NOT USE THIS EQUIPMENT WHERE HAZARDOUS OR EXPLOSIVE DUST, VAPOR OR LIQUIDS MAY BE PRESENT
DO NOT MOUNT ON COMBUSTIBLE SURFACES

RX-29 & RX-30 Ro-Tap® PARTS DIAGRAM



RX-29 & RX-30 Ro-Tap® PARTS LIST

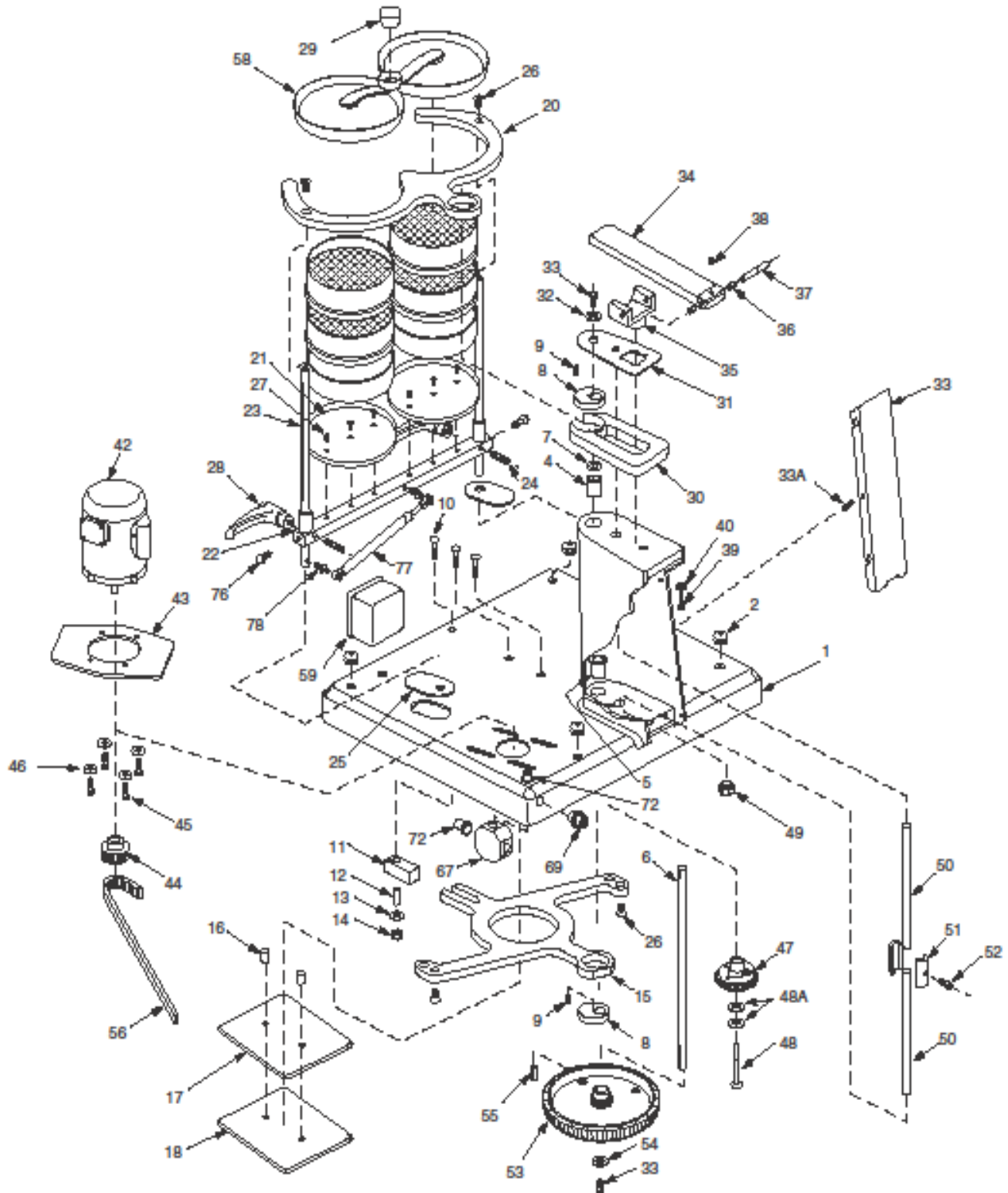
4

ITEM	PART	DESCRIPTION	QTY REQ'D	ITEM	PART	DESCRIPTION	QTY REQ'D
1	107770	Base	1	41	R-40037	Electronic Timer (230v)	1
2	R-20029	Hammer	1	41A	R-40040	Timer Mounting Clip	2
3	R-20023	Hammer Block	1	42	P-1500-23	Motor-Standard 115/230v 60/50Hz 1Phase	1
4	R-30019	Sheet Guard	1	42A	ZF10183	3/8-16 x 1" Hex Flange Bolt	4
5	R-30010	Rotating Guard	1	43	R-10058	Timing Belt	1
6	R-10036	Lift Rod	2	44	R-10055	Shim	1
7	R-10038	Upper Main Shaft Washer	1	45	ZZ10068	1/2-13 x 2.50" Long Hex Hd. Bolt	1
8	R-20027	Main Shaft	1	45A	ZZ10323	1/2 I.D. Lock Washer	1
9	R-30008	Upper Carrying Plate/RX-29	1				1
9a	R-30008-1	Upper Carrying Plate (alum)	1	47	R-10079	Clamp Screw	2
9	R-30027	Upper Carrying Plate/RX-30	1	48	ZF10221	3/8" Lock Nut	3
10	R-30009	Lower Carrying Plate	1	49	ZF10222	1/2" Hex Lock Nut	1
12	R-20039	Cam Gear	1	50	ZF10231	10-32x.50" LongFlatHeadSocketCap Screw	3
13	R-30015	Timing Belt Pulley	1	51	ZF10241	3/8-16x.75"LongFlatHeadSocketCap Screw	2
14	R-10034	Eccentric Disc	2	51A	ZF10183	3/8-16x1" Hex Flange Bolt	2
15	R-10032	Block	1	52	114162	3/6-16x x 62" Long Hex Head Screw	2
16	R-30007	Sieve Cover (RX-29)	1	53	ZF10251	5/16-24x1.25" LongSocket HeadCapScrew	1
16	R-30011	Sieve Cover (RX-30)	1	54	R-20082	Adj. Handle (Support Bar)	2
17	R-30006	Sieve Support Plate (RX-29)	1	55	ZA10148	#10-24x.25" Socket Hd. Set Screw	1
17	R-30013	Sieve Support Plate (RX-30)	1	56	ZF10271	3/8 I.D. X 1.50" O.D. Fender Washer	1
18	R-30023	Sieve Support Clamp Bar (RX-29)	1	60*	R-10018	Timer Cord w/Plug	1
18	R-30022	Sieve Support Clamp Bar (RX-30)	1	61*	R-10019	Cable Tie M'g	3
19	R-20019	Backup Plate	1	62*	R-10112	Straight Connector (APC-050)	2
20	R-20020	Bearing Plate	1	66*	107764	Flexible Conduit	1
21	R-20033	Shield	2	67*	R-10076	Wire Clip	1
22	R-10028	Tube Spacer	2	68*	ZZ10011	Screw For Wire Clip & Ground Screw	3
23	R-10029	Cam Shoulder Screw	1	69*	R-20081	Wrench	1
23A	106582	I.D. Shim	2				
24	R-10042	Main Shaft Key to Eccentric	2				
25	R-10039	Main Shaft Key-Lower	1				
26	R-10035	Hammer Pin	1				
27	R-10066	Cork plug	1				
28	108184	Name Plate	1				
29	R-10033	Tie-Rod	2				
30	R-30018	Motor Adapter	1				
31	ZA11167	Grommet	2				
32	R-10030	Lift Rod Coupling(2.50" Long)	1				
33	R-40011	Pedestal Cover	1				
33A	8/18 X 75	Self Tapping Screw	1				
34	R-10061	Flange Bearing	1				
35	R-10062	Bearing	1				
36	R-10063	Flange Bearing	2				
37	ZF10168	Thrust Washer	1				
38	R-10065	Steel Bushing	1				
39	ZF10174	3.8-16 NC X 2.25" Carriage Bolt	3				
40	R-10070	Sprocket-14-Teeth (1800 RPM) w/Set Screw	1				
		Sprocket-17-Teeth (1500 RPM) w/Set Screw	1				
41	R-40029	Electronic Timer (115v)	1				

***ITEMS NOT SHOWN
*PARTS SOLD AS EACH**

5

RX-94 Ro-Tap® II PARTS DIAGRAM



RX-94 Ro-Tap® II PARTS LIST

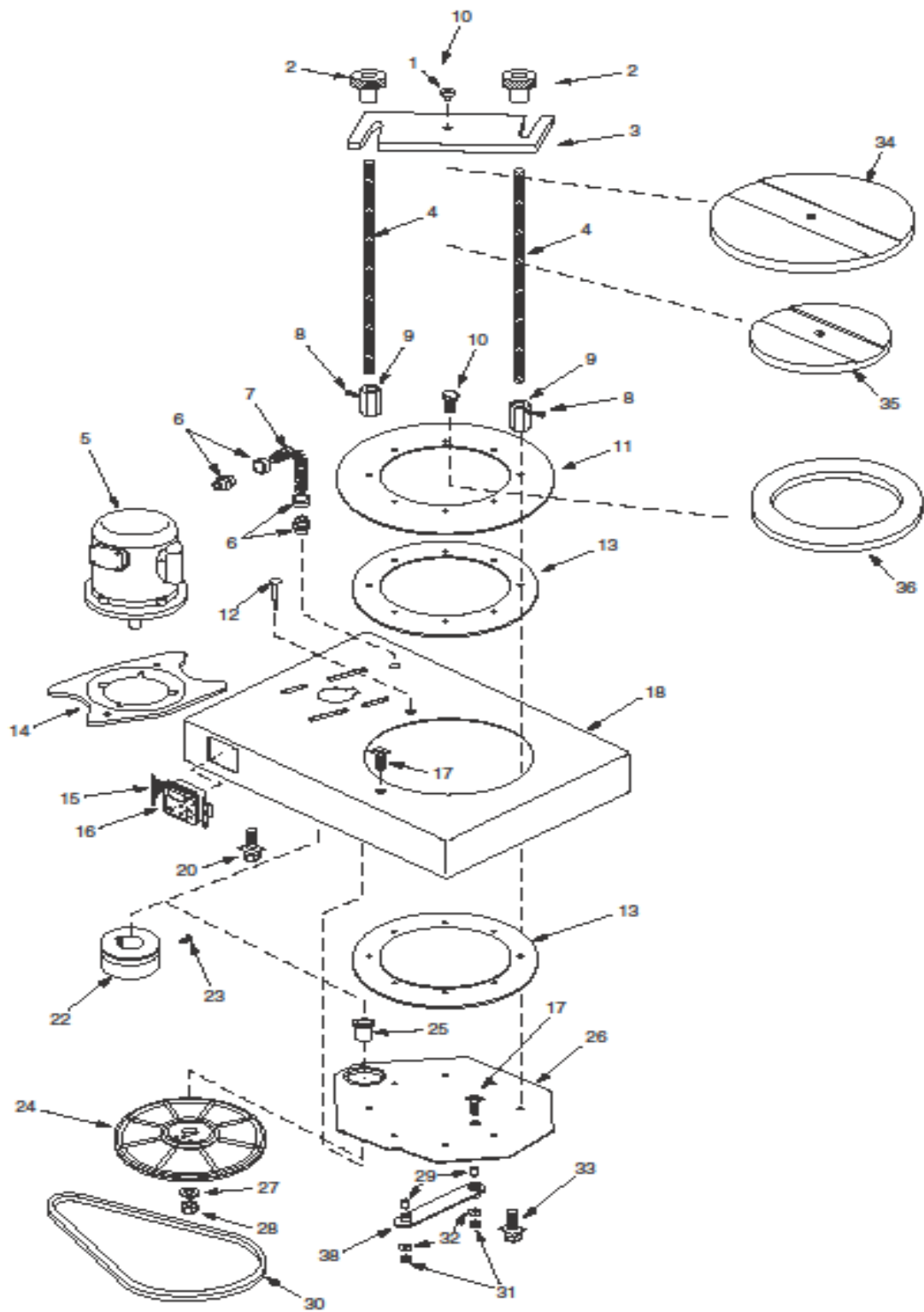
6

ITEM	PART	DESCRIPTION	QTY REQD	ITEM	PART	DESCRIPTION	QTY REQD
1	R-40023	Painted Base Weldment	1	48A	106582	½" I.D. Shim	2
2	ZA11167	Grommet	4	49	ZF10222	½"-13 Locknut	1
3	R-10117	Gasket Channel	4	50	R-10036	Lift Rod	2
4	R-10061	Flanged Bearing	1	51	R-10030	Lift Rod Coupling	1
5	R-10062	Bearing	1	52	ZF10251	5/16-24 x 1/25" Long Socket Head Cap Screw	1
6	R-20027	Mainshaft	1	53	R-30015	Timing Belt Pulley	1
7	R-10055	Shim 1.420.D. x .0155 Th.	1	54	ZF10271	3/8 I.D. X 1.50" O.D. Fender Washer	1
8	R-10034	Eccentric Disc	2	55	R-10039	Main Shaft Key (Lower)	1
9	R-10042	Main Shaft Key	2	56	R-10058	Timing Belt	1
10	ZF10174	3/8-16 x 2.25" Carriage Bolt	3	57	R-40011	Pedestal Cover	1
11	R-10032	Block	1	58	R-40020	Dual Sieve Cover	1
12	R-10065	Steel Bushing .62 O>D> x .385 I.D. x1.25"	1	59	R-40030	Timer Enclosure	1
13	ZF10168	3/8" Flatwasher	1	60*	R-40029	Electronic Timer (115v)	1
14	ZF10221	3/8-16 Locknut	2	60*	R-40037	Electronic Timer (230v)	1
15	R-40017	Lower Carrying Plate	1	61*	ZZ10014	¼ x 1.25" Long Hex Head Screw	2
16	R-10028	Tube Spacer	2	62*	ZZ10281	¼ I.D. Flat Washer	2
17	R-20020	Bearing Plate	1	63*	R-40034	Spacer (for Timer Enclos.)	2
18	R-20019	Back-Up Plate	1	64*	ZZ10253	¼-20 Hex Nut	2
19	ZF10221	3/8-16 Lockout	2	65	108184	Name Plate	1
20	R-40019	Upper Carrying Plate	1	66	Std.#7	Drive Screws	2
21	R-30006	Support Plate	2	67	R-10118	3 ¼" Octagon Box (Appleton #30))	1
22	R-40018	Dual Sieve Support Clamp Bar	1	68*	R-40032	3 ¼" Square Box Cover	1
23	R-40021	Tie Rod	2	69	R-10119	½" Cord Grip Strain Relief (Appleton #CG31505)	1
24	R-10079	Clamp Screw	2	70*	11478	X 1/50 Long Nipple	1
25	R-20033	Shield	2	72	R-10112	Straight Connector?APC-050	2
26	ZF10241	3/8-16 x .75" Long Flat Head Screw	4	73*	R-10116	Extra Flex Connector/ APC-0509	2
27	ZF10231	#10-32 x .50" Long Flat Head Screw	6	74*	114163	Non-Metallic Flex Conduit (LTC 050) 0' 12" Long	1
28	R-20082	Adj. Handles (Support Bar)	2	75*	114164	Non Metallic Flex Conduit (LTC050) 1' 9 ½" Long	1
29	R-10066-A	Cork Plug	1	76	R-40028	Hand Retractable Plunger	2
30	R-30010	Rotating Guard Assembly	1	77	R-10099-30	Gas Spring (Guden #CG824-30)	1
31	R-30019	Sheet Guard	1	78	114165	Spring Stud (Guden #BS101-02)	2
32	R-10038	Upper Mainshaft Washer	1	*ITEMS NOT SHOWN *PARTS SOLD AS EACH			
33	114162	3/8-16 x .62" Long Hex Head Cap Screw	2				
34	R-20029	8" Hammer	1				
35	R-20023	Hammer Block	1				
36	R-10063	Flanged Bearing	2				
37	R-10035	Hammer Pin	1				
38	ZA10148	#10-24 x .25" Long Flat Point Socket Screw	1				
39	ZZ10068	1/2 x 2.50" Long Hex Head Bolt	1				
40	ZZ10323	½ I.D. Lockwasher	1				
42	P-1500-23	Motor-Standard 115/230V 60/50Hz 1 phase	1				
43	R-30018	Motor Adapter Plate	1				
44	R-10070	Sprocket-14 Teeth(1800 rpm) w/ Set Screw	1				
45	ZF10183	3/8-16 x 1.00" Long Hex Head Screw	4				

7

46	ZF10168	3/8 I.D. Flat Washer	4
47	R-20039	Cam Gear	1
48	R-10029	Cam Shoulder Screw	1

RX-812 COARSE SIEVE SHAKER PARTS DIAGRAM



RX-812 COARSE SIEVE SHAKER PARTS LIST

8

ITEM	PART	DESCRIPTION	QTY.
1	LC10016	Locating Pin	1
2	LC10017	Clamping Knobs	2
3	LC10018	Clamp Bar	1
4	LC10015	Clamping Rods	2
5	P-1500-23	Motor ¼ HP 115/230V 60/50 Hz 1 Phase	1
6	R-10112	Flexible Conduit Connector	2
7	102542	Oilite Flexible Conduit – 8-1/2"	1
8	ZA10956	10-24 Cup Point Set Screw	4
9	LC10014	Coupling	2
10	LB10266	Rolok 10-24 Self Tap Screw	6
11	LC10007	Shield	1
12	LB10041	Special Carriage Bolt	1
13	LC10005	Bearing Ring	2
14	LC10052	Adapter	1
15	R-40040	Timer Mounting Clip	2
16	R-40029	Electronic Timer (115v)	1
16	R-40037	Electronic Timer 230v)	1
17	ZZ10792	-28 x 1-3/4" Soc. Cap. Ser.	2
18	LC10003	Base, Sieve Shaker	1
19	LC10052	Rubber Channel	1
20	ZF10183	3/8" – 16 x 1.00 Hex Hd. Bolt	3
21	108184	Nameplate	1
22	LB10111	Drive Pulley – 1-1/2" O.D.	1
23	ZA10148	10-24 x 3/8" Cup Point Set Scr.	1
24	LB10451	Pulley/Eccentric Assembly	1
25	LB10191	Flanged Stand Off Bushing	1
26	LC10006	Carrying Plate	1
27	ZF10168	3/8" Hard Washer	1
28	ZF10221	3/8" -16 Lock Nut	1
29	LB10201	Stand Off Bushing	2
30	LB10211	Drive Belt-21.310	1
31	ZZ10801	¼"-28 Black Lock Not	2
32	ZZ10301	Flat Washer	6
33	ZF10184	5/16"-18 Black Hex Hd. Bolt	2
34	LC10010	12" Cover Clamping Plate	1
35	LC10011	8" Cover Clamping Plate	1
36	LC10009	12" to 8" Conversion Plate	1
37*	R-10018	110V Cord Set	1
38	LC10012	Arm	1