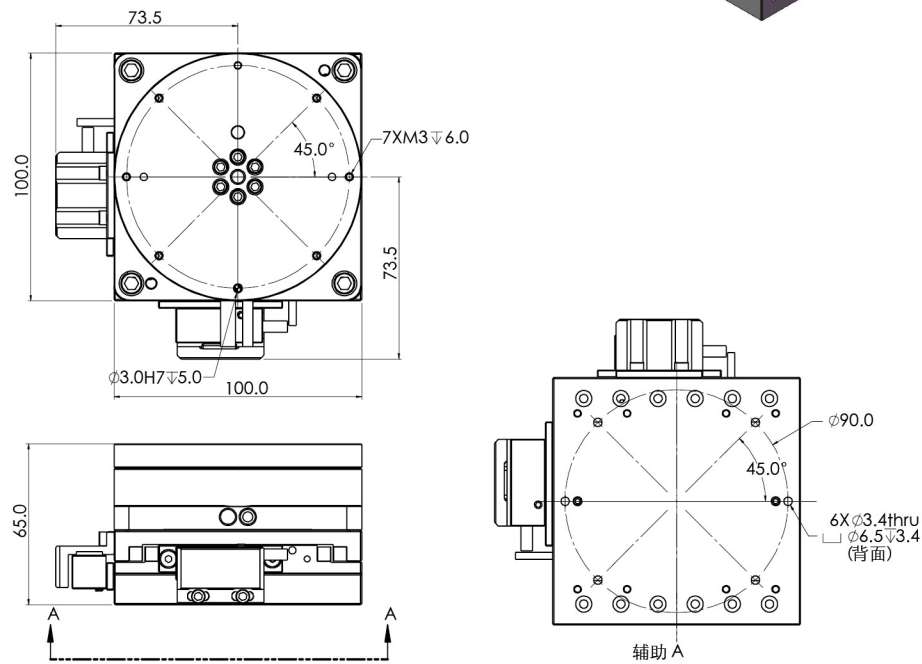
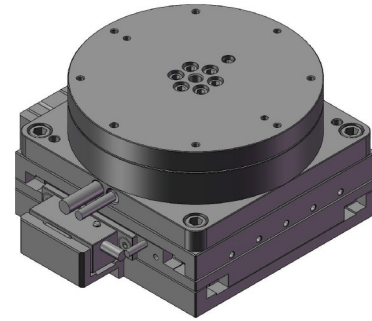


DKW XYθ Series 系列

XYθ对位平台 XYθ Stage

型号/Model:
DKW XYθ 100P

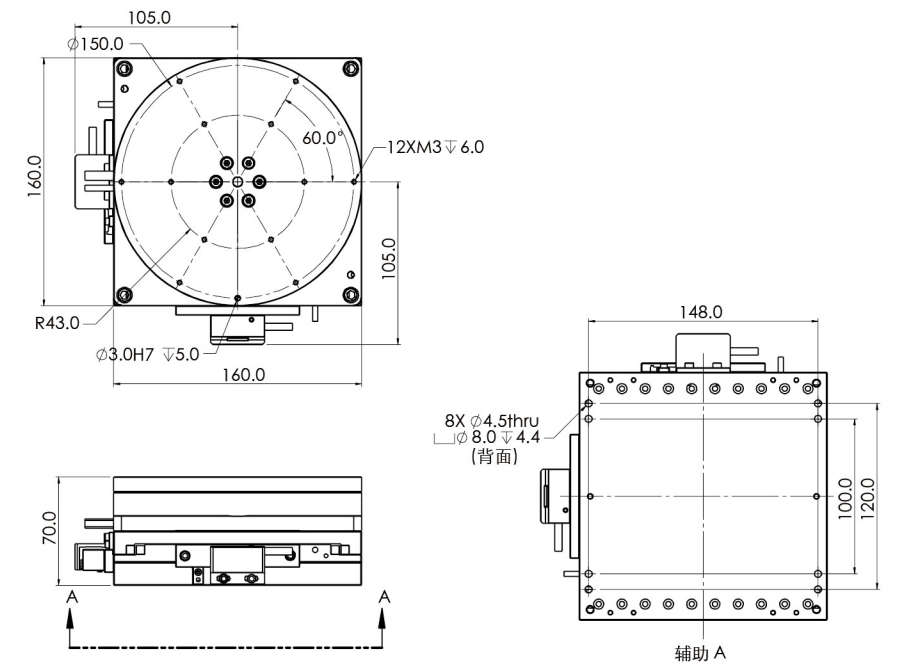
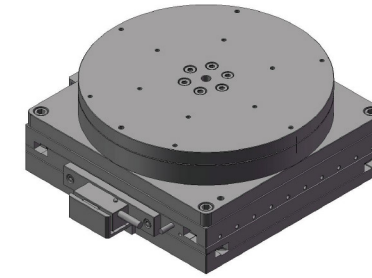
尺寸图/Dimensional Drawing:



XYθ对位平台 XYθ Stage

型号/Model:
DKW XYθ 160P

尺寸图/Dimensional Drawing:



性能参数/Performance:

DKW XYθ 100P对位平台/DKW XYθ 100P Stage

	X轴/X-Axis	Y轴/Y-Axis		θ轴/θ-Axis
行程 Stroke	±4.0 mm	±4.0 mm	行程 Stroke	±5°
重复精度 Repeatability	±2 μm	±2 μm	重复精度 Repeatability	±0.005°
连续推力 Continuous Force	12.0 N	12.0 N	连续转矩 Continuous Torque	0.8 Nm
峰值推力 Peak Force	36.0 N	36.0 N	最大转矩 Peak Torque	2.4 Nm
连续电流 Continuous Current	1.0 Arms	1.0 Arms	连续电流 Continuous Current	1.0 Arms
峰值电流 Peak Current	3.0 Arms	3.0 Arms	峰值电流 Peak Current	3.0 Arms

性能参数/Performance:

DKW XYθ 160P对位平台/DKW XYθ 160P Stage

	X轴/X-Axis	Y轴/Y-Axis		θ轴/θ-Axis
行程 Stroke	±8.0 mm	±8.0 mm	行程 Stroke	±5°
重复精度 Repeatability	±2 μm	±2 μm	重复精度 Repeatability	±0.005°
连续推力 Continuous Force	50.0 N	50.0 N	连续转矩 Continuous Torque	3 Nm
峰值推力 Peak Force	105.0 N	105.0 N	最大转矩 Peak Torque	6.3 Nm
连续电流 Continuous Current	2.0 Arms	2.0 Arms	连续电流 Continuous Current	2.0 Arms
峰值电流 Peak Current	4.2 Arms	4.2 Arms	峰值电流 Peak Current	4.2 Arms

EDD Series 系列

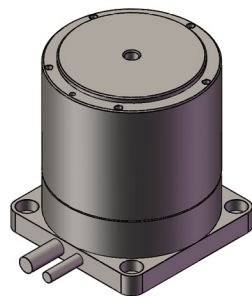
EDDR60力矩直驱电机

EDDR60 Torque Motor(Direct Drive Motor)

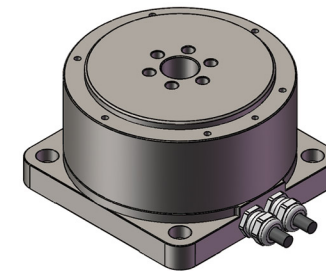
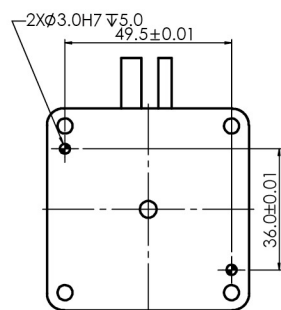
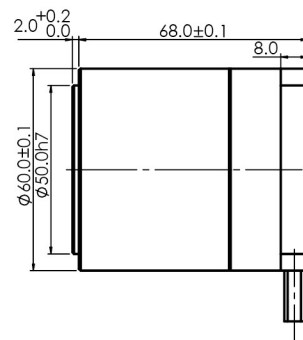
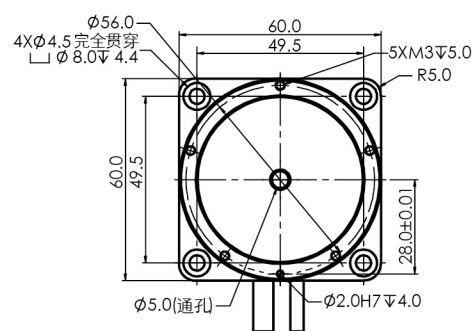
型号/Model:

EDDR60-H70-A

EDDR60-H70-B



尺寸图/Dimensional Drawing:



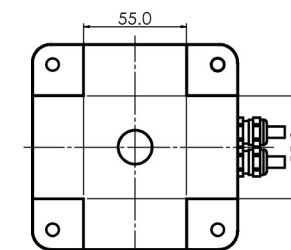
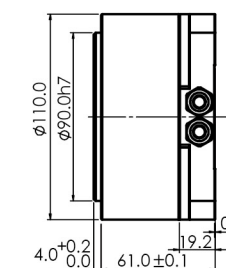
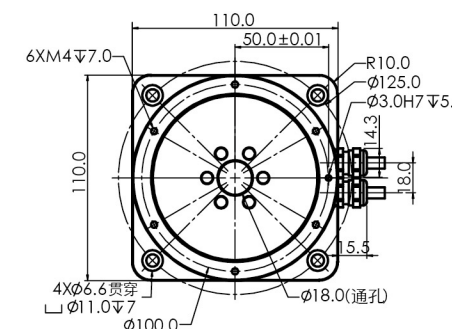
EDDR110力矩直驱电机 EDDR110 Torque Motor(Direct Drive Motor)

型号/Model:

EDDR110-H65-A

EDDR110-H65-B

尺寸图/Dimensional Drawing:



性能参数/Performance:	单位/Unit:
连续转矩 Continuous Torque	1.03 Nm
连续电流 Continuous Current	2.50 Arms
最大转矩 Peak Torque	2.46 Nm
最大电流 Peak Current	6.00 Arms
转矩常数 Torque Constant	0.41 Nm/Arms
电阻 Resistance	2.56 Ω (20°C)
电感@250rpm (ptp) Inductance@250(ptp)	8.88 mH (20°C)
极数 Pole Number	22
反电势常数 (ptp) Back-Emf Constant(ptp)	0.28 Vrms/(rad/s)
最大连续功耗 Max Continuous Power Dissipation	24.00 W (20°C)
电机常数 Motor Constant	0.21 Nm/√w

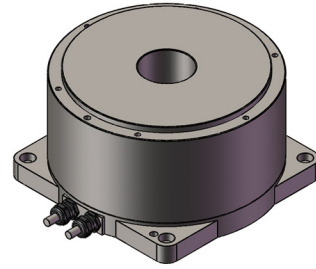
性能参数/Performance:	单位/Unit:
转动惯量 Inertia Of Rotating Parts	0.002 kgm ²
电机重量 Mass Of Motor	0.85 kg
最高转速 Max.Speed	300 rpm
定位精度 Accuracy	±30 Arc sec
重复精度 Repeatability	EDDR60-H70-A: ±25 Arc sec EDDR60-H70-B: ±5
分辨率 Resolution	EDDR60-H70-A: 100000 p/rev EDDR60-H70-B: 500000
最大轴向载荷 Max.Axial Load	4000 N
最大径向载荷 Max Moment Load	40 Nm
轴向偏摆 Axial Runout	0.005 mm
径向偏摆 Radial Runout	0.005 mm
高度 Height	70 mm

性能参数/Performance:	单位/unit:
连续转矩 Continuous Torque	6.30 Nm
连续电流 Continuous Current	2.50 Arms
最大转矩 Peak Torque	15.00 Nm
最大电流 Peak Current	6.00 Arms
转矩常数 Torque Constant	2.51 Nm/Arms
电阻 Resistance	8.58 Ω (20°C)
电感@250rpm (ptp) Inductance@250(ptp)	29.78 mH (20°C)
极数 Pole Number	22
反电势常数 (ptp) Back-Emf Constant(ptp)	1.70 Vrms/(rad/s)
最大连续功耗 Max Continuous Power Dissipation	80.44 W (20°C)
电机常数 Motor Constant	0.70 Nm/√w

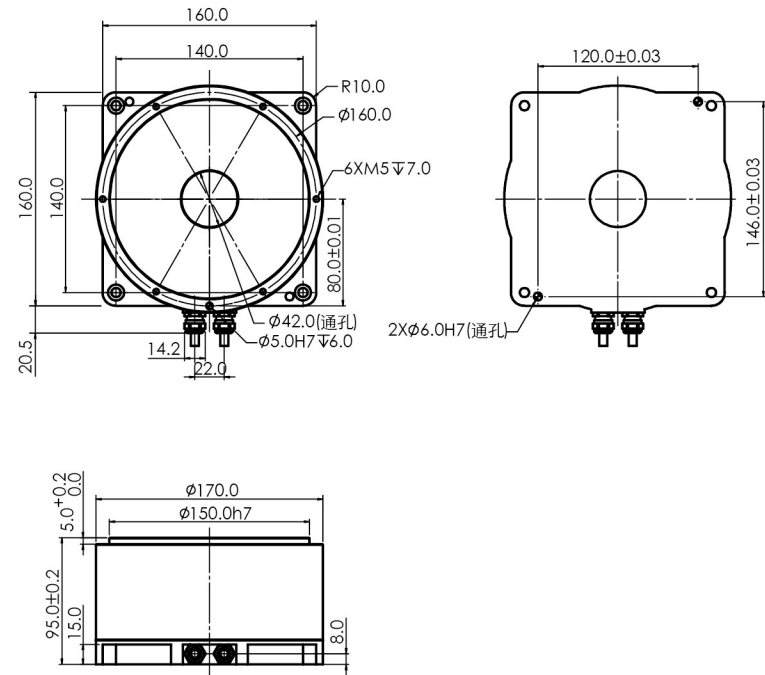
性能参数/Performance:	单位/unit:
转动惯量 Inertia Of Rotating Parts	0.003 kgm ²
电机重量 Mass Of Motor	2.6 kg
最高转速 Max.Speed	300 rpm
定位精度 Accuracy	±30 Arc sec
重复精度 Repeatability	EDDR110-H65-A: ±10 Arc sec EDDR110-H65-B: ±2.5
分辨率 Resolution	EDDR110-H65-A: 500000 p/rev EDDR110-H65-B: 1000000
最大轴向载荷 Max.Axial Load	4000 N
最大径向载荷 Max Moment Load	40 Nm
轴向偏摆 Axial Runout	0.008 mm
径向偏摆 Radial Runout	0.008 mm
高度 Height	61 mm

EDDR170力矩直驱电机 EDDR170 Torque Motor(Direct Drive Motor)

型号/Model:
EDDR170-H95-A
EDDR170-H95-B



尺寸图/Dimensional Drawing:

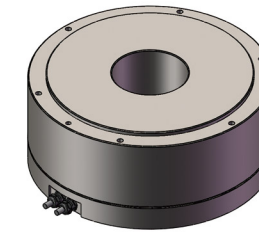


性能参数/Performance:	单位/Unit:
连续转矩 Continuous Torque	22.5 Nm
连续电流 Continuous Current	2.5 Arms
最大转矩 Peak Torque	67.5 Nm
最大电流 Peak Current	7.5 Arms
转矩常数 Torque Constant	9 Nm/Arms
电阻 Resistance	8.8 Ω (20°C)
电感@250rpm (ptp) Inductance@250(ptp)	6.2 mH (20°C)
极数 Pole Number	22
反电势常数 (ptp) Back-Emf Constant(ptp)	6.18 Vrms/(rad/s)
最大连续功耗 Max Continuous Power Dissipation	118.80 W (20°C)
电机常数 Motor Constant	2.49 Nm/ \sqrt{w}

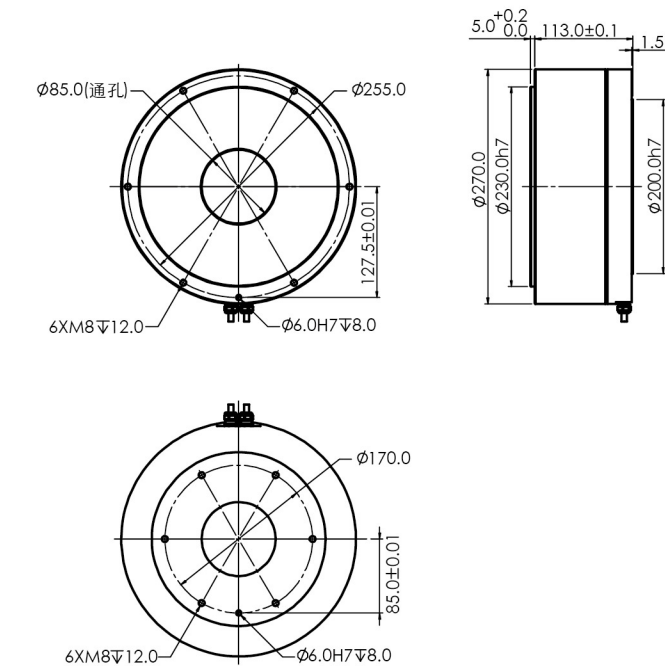
性能参数/Performance:	单位/Unit:
转动惯量 Inertia Of Rotating Parts	0.02 kgm ²
电机重量 Mass Of Motor	11.9 kg
最高转速 Max.Speed	250 rpm
定位精度 Accuracy	\pm 30 Arc sec
重复精度 Repeatability	EDDR170-H95-A: \pm 10 EDDR170-H95-B: \pm 2.5 Arc sec
分辨率 Resolution	EDDR170-H95-A: 234800 EDDR170-H95-B: 1174000 p/rev
最大轴向载荷 Max.Axial Load	4000 N
最大径向载荷 Max Moment Load	60 Nm
轴向偏摆 Axial Runout	0.008 mm
径向偏摆 Radial Runout	0.008 mm
高度 Height	95 mm

EDDR270力矩直驱电机 EDDR270 Torque Motor(Direct Drive Motor)

型号/Model:
EDDR270-H118-A
EDDR270-H118-B



尺寸图/Dimensional Drawing:



性能参数/Performance:	单位/unit:
连续转矩 Continuous Torque	63.57 Nm
连续电流 Continuous Current	6.00 Arms
最大转矩 Peak Torque	152.58 Nm
最大电流 Peak Current	15.00 Arms
转矩常数 Torque Constant	10.39 Nm/Arms
电阻 Resistance	3.46 Ω (20°C)
电感@250rpm (ptp) Inductance@250(ptp)	5.66 mH (20°C)
极数 Pole Number	22
反电势常数 (ptp) Back-Emf Constant(ptp)	7.30 Vrms/(rad/s)
最大连续功耗 Max Continuous Power Dissipation	186.84 W (20°C)
电机常数 Motor Constant	4.65 Nm/ \sqrt{w}

性能参数/Performance:	单位/unit:
转动惯量 Inertia Of Rotating Parts	0.21 kgm ²
电机重量 Mass Of Motor	28 kg
最高转速 Max.Speed	150 rpm
定位精度 Accuracy	\pm 30 Arc sec
重复精度 Repeatability	EDDR270-H118-A: \pm 5 EDDR270-H118-B: \pm 2.5 Arc sec
分辨率 Resolution	EDDR270-H118-A: 405000 EDDR270-H118-B: 2025000 p/rev
最大轴向载荷 Max.Axial Load	4000 N
最大径向载荷 Max Moment Load	400 Nm
轴向偏摆 Axial Runout	0.008 mm
径向偏摆 Radial Runout	0.008 mm
高度 Height	118 mm

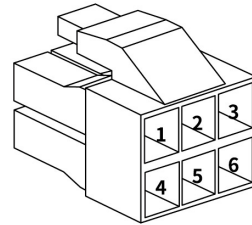
Electricity Control & Driver 电控与驱动

直线电机接口定义

Linear Motor Interface Definition

电机插头

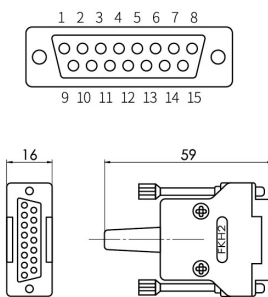
Motor Connector: YL-6P



序号/NO.	1	2	3	4	5	6
标注 Label	M1	M2	M3	PE	TS	TS
功能 Function	电机相线 Motor Phases	电机相线 Motor Phases	电机相线 Motor Phases	保护地 Earth	温度开关 Temp.Switch	温度开关 Temp.Switch

MS15光栅插头

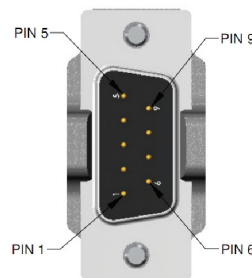
Optical Encoder Connector:D-Sub 15P,Male



序号/NO.	2	4	5	6	7	8	9	10	11	12	13	14
信号 Signal	GND	Z-	B-	A-	+5V	+5V	GND	S1	S2	Z+	B+	A+

DME010磁栅插头

Magnetic Encoder Connector:D-Sub 9P,Male



序号/NO.	1	2	3	4	5	6	7	8	9
信号 Signal	(不接NC)	Z+	B+	A+	+5V	Z-	B-	A-	GND

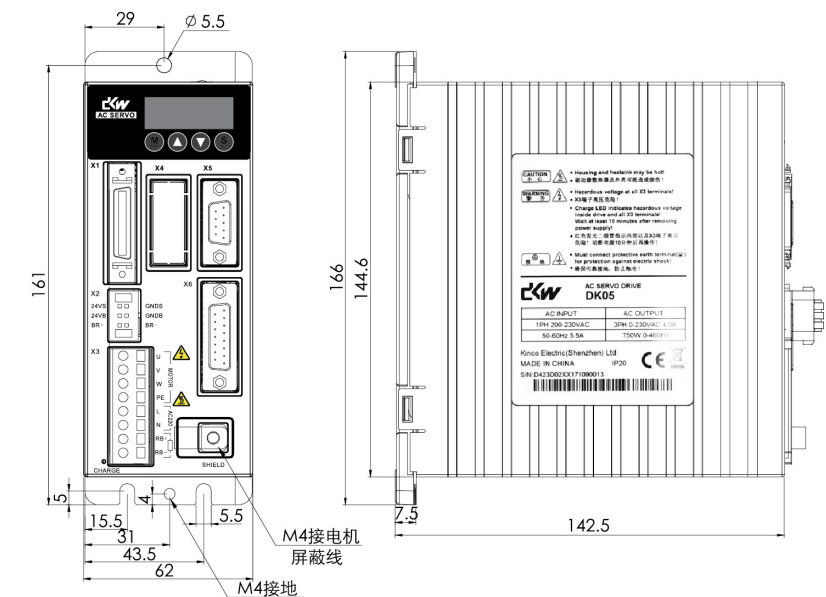


直线电机驱动器 Linear Motor Driver

型号/Model:

DK05

尺寸图/Dimensional Drawing:



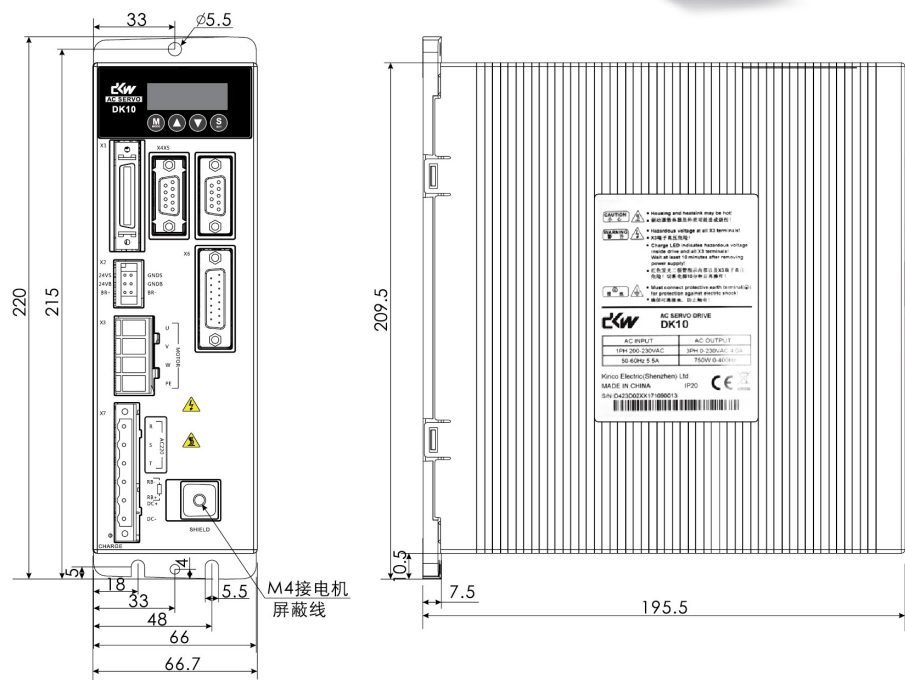
性能参数/Performance:

主电源 Main Power	220 VAC
逻辑电源 Logic Power	+24 VDC
输出持续电流 Output Continuous Current	5 Arms
输出最大电流 Output Peak Current	10 Arms
控制方式 Control Mode	位置控制:脉冲/方向,正反脉冲 Position: Pulse/Direction,CW/CCW 速度控制:模拟量±10V Velocity: Analog ±10V 力矩控制:模拟量±10V Torque: Analog ±10V
编码器接口 Encoder Type	增量式A+,A-,B+,B-,Z+,Z- Incremental encoder
工作温度 Working Temperature	0°C ~ 40°C

直线电机驱动器 Linear Motor Driver

型号/Model:
DK10

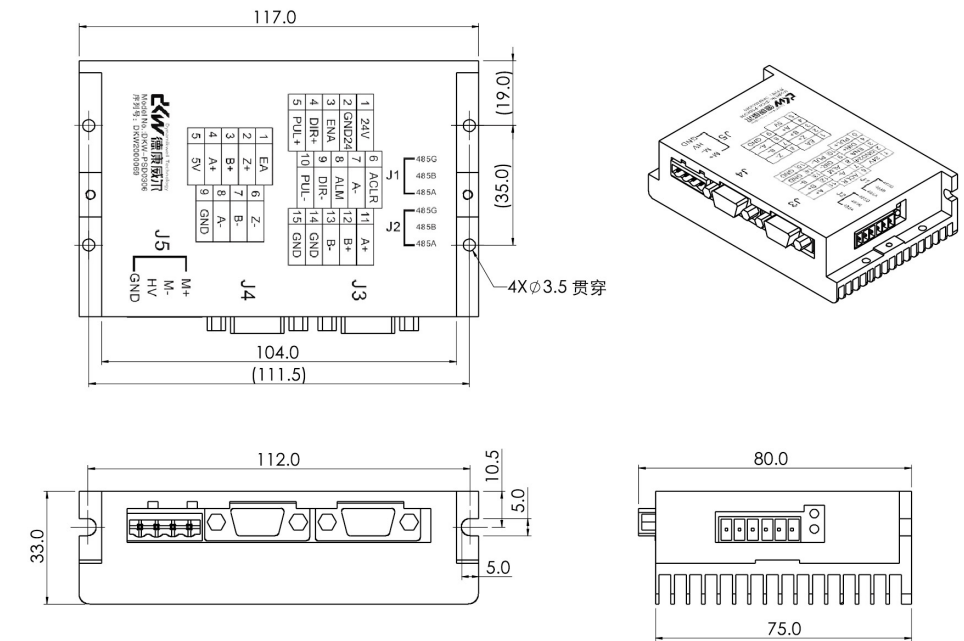
尺寸图/Dimensional Drawing:



音圈电机驱动器 Voice Coil Motor Driver

型号/Model:
PSD0306

尺寸图/Dimensional Drawing:



性能参数/Performance:

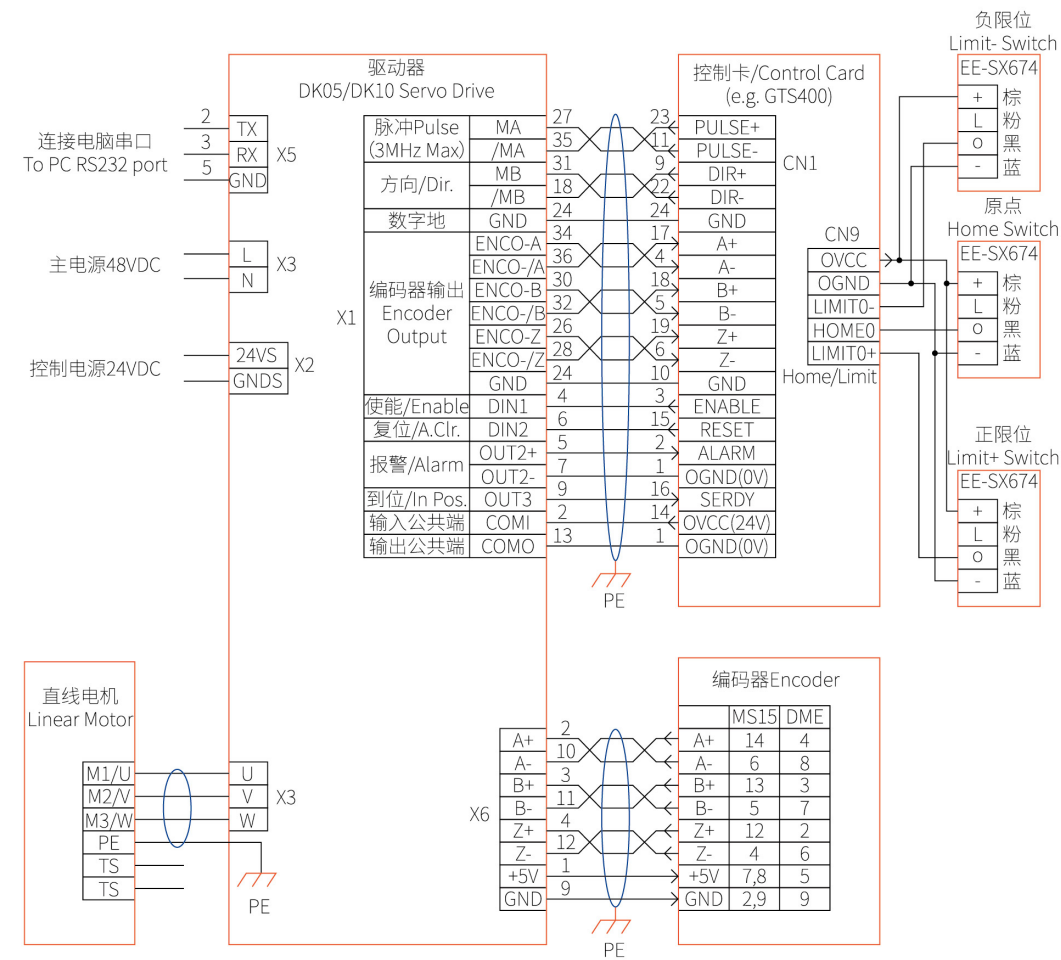
主电源 Main Power	220 VAC
逻辑电源 Logic Power	+24 VDC
输出持续电流 Output Continuous Current	10 Arms
输出最大电流 Output Peak Current	20 Arms
控制方式 Control Mode	位置控制: 脉冲/方向, 正反脉冲 Position: Pulse/Direction, CW/CCW 速度控制: 模拟量±10V Velocity: Analog ±10V 力矩控制: 模拟量±10V Torque: Analog ±10V
编码器接口 Encoder Type	增量式A+, A-, B+, B-, Z+, Z- Incremental encoder
工作温度 Working Temperature	0°C ~ 40°C

性能参数/Performance:

主电源 Main Power	+24 ~ +48 VDC
输出持续电流 Output Continuous Current	3 Arms
输出最大电流 Output Peak Current	6 Arms
控制方式 Control Mode	通讯方式: RS485, Modbus-RTU协议, 支持位置/速度/力矩控制; Communication: Support Position/Velocity/Torque mode, motion card free, provide DLL for VC, C#, VB etc. 位置控制: 脉冲/方向, 正反脉冲 Position: Pulse/Direction, CW/CCW 力矩控制: PWM(±50%)或PWM(0~100%)/方向 Torque: PWM(±50%) Or PWM(0~100%)/Dir.
编码器接口 Encoder Type	增量式A+/A-, B+/B-, Z+/Z- Incremental encoder
工作温度 Working Temperature	0°C ~ 40°C

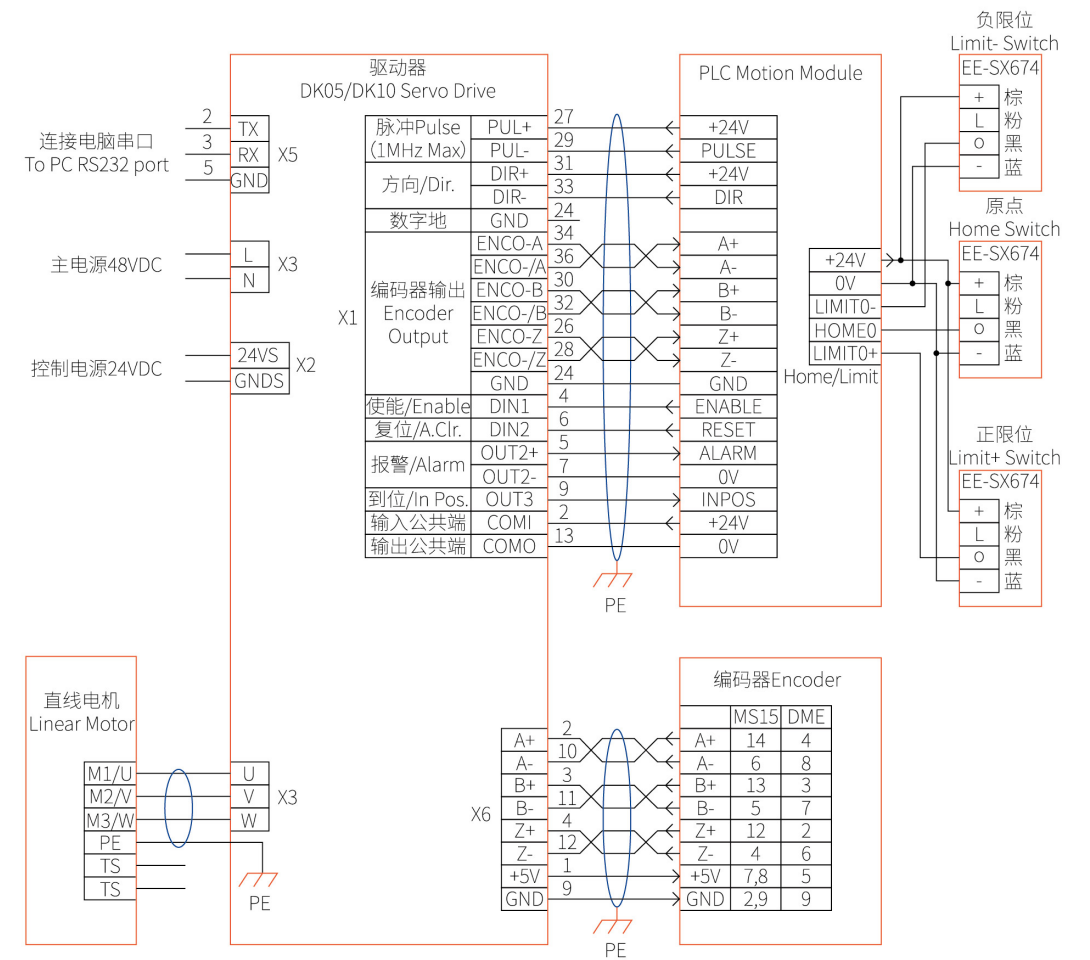
直线电机模组接线图 Linear Motor Module Wiring

适用模组系列/Matched Series	DKW65,DKW80-Z
控制方式/Control Interface	脉冲/方向(Pulse/Dir), 正反脉冲(CW/CCW)
信号类型/Signal Type	差分信号/Differential
脉冲频率/Pulse Frequency	3 MHz
控制电源/Control Power	24 VDC
主电源/Main Power	48 VDC



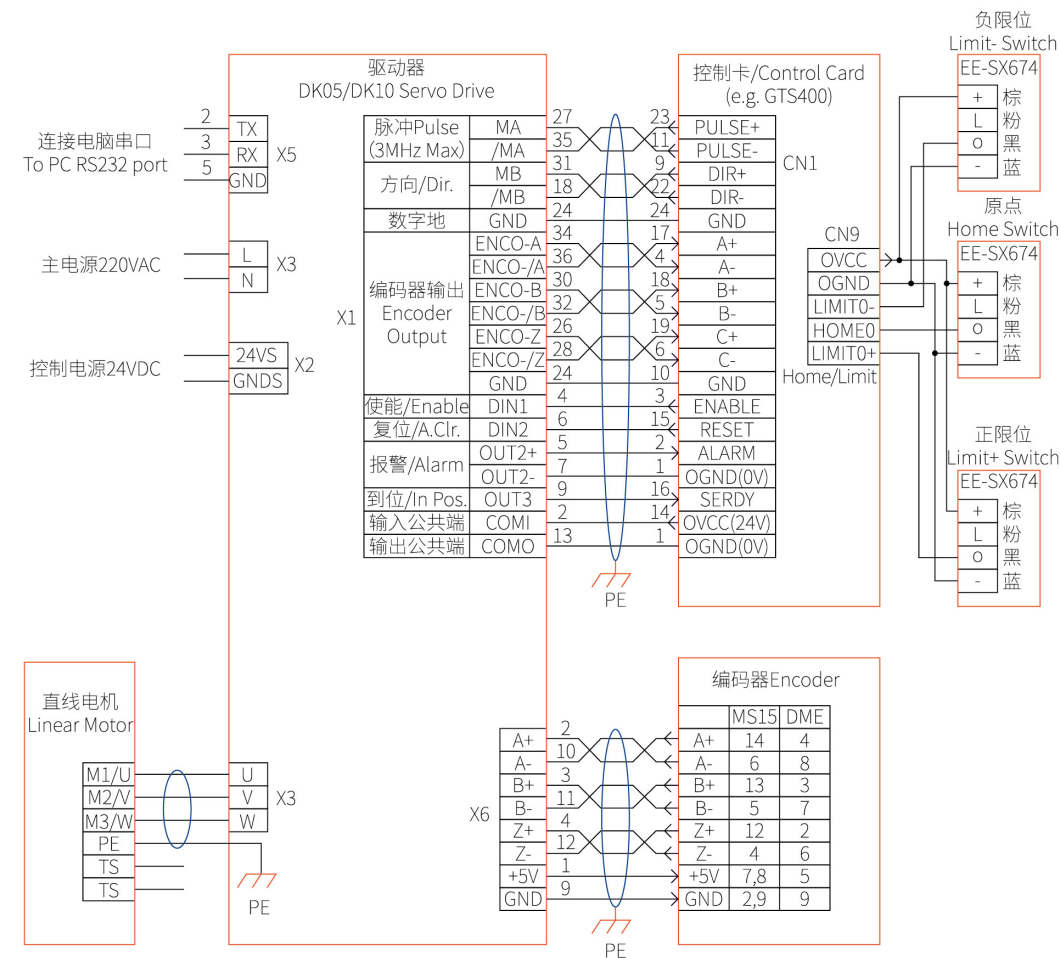
直线电机模组接线图 Linear Motor Module Wiring

适用模组系列/Matched Series	DKW65,DKW80-Z
控制方式/Control Interface	脉冲/方向(Pulse/Dir), 正反脉冲(CW/CCW)
信号类型/Signal Type	单端信号/Single Ended
脉冲频率/Pulse Frequency	1 MHz
控制电源/Control Power	24 VDC
主电源/Main Power	48 VDC



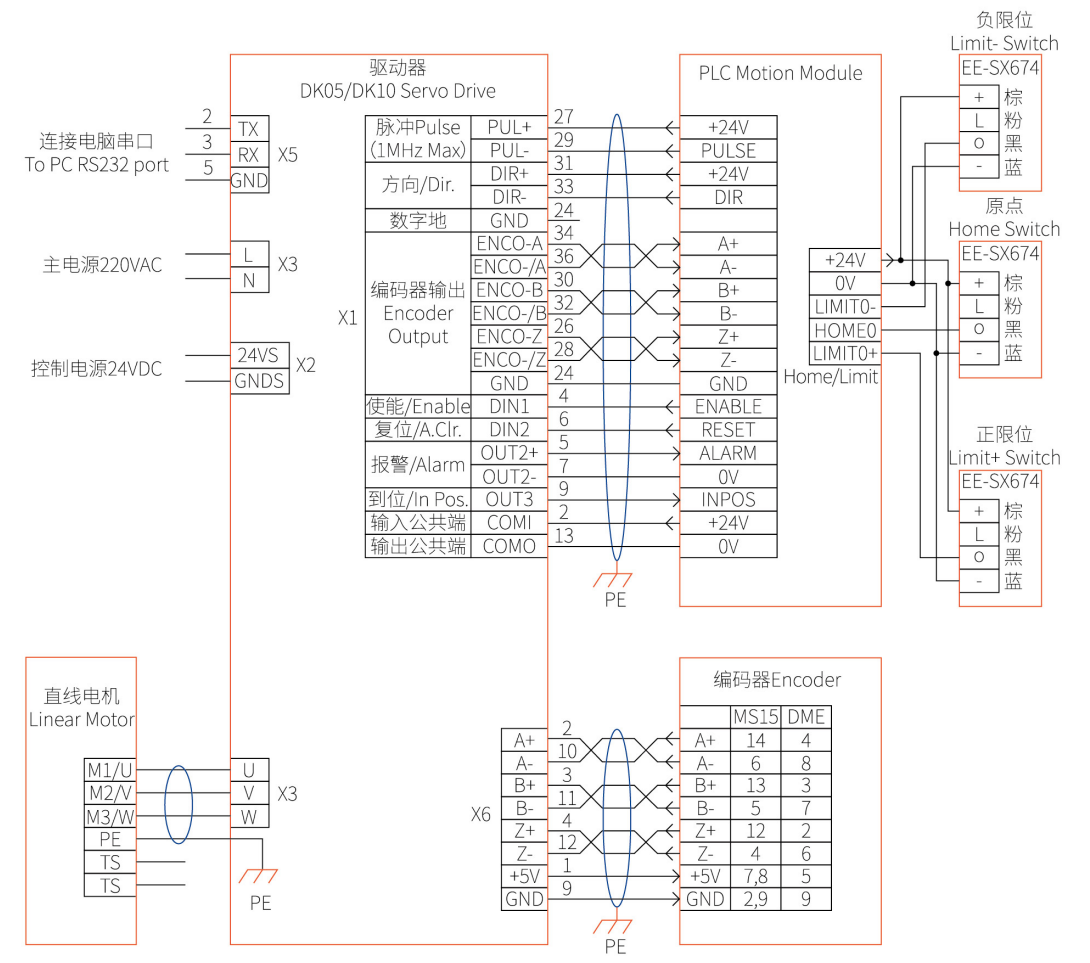
直线电机模组接线图 Linear Motor Module Wiring

适用模组系列/Matched Series	DKW85,DKW90,DKW100,DKW100-Z,DKW118,DKW140,DKW165
控制方式/Control Interface	脉冲/方向(Pulse/Dir),正反脉冲(CW/CCW)
信号类型/Signal Type	差分信号/Differential
脉冲频率/Pulse Frequency	3 MHz
控制电源/Control Power	24 VDC
主电源/Main Power	220 VAC



直线电机模组接线图 Linear Motor Module Wiring

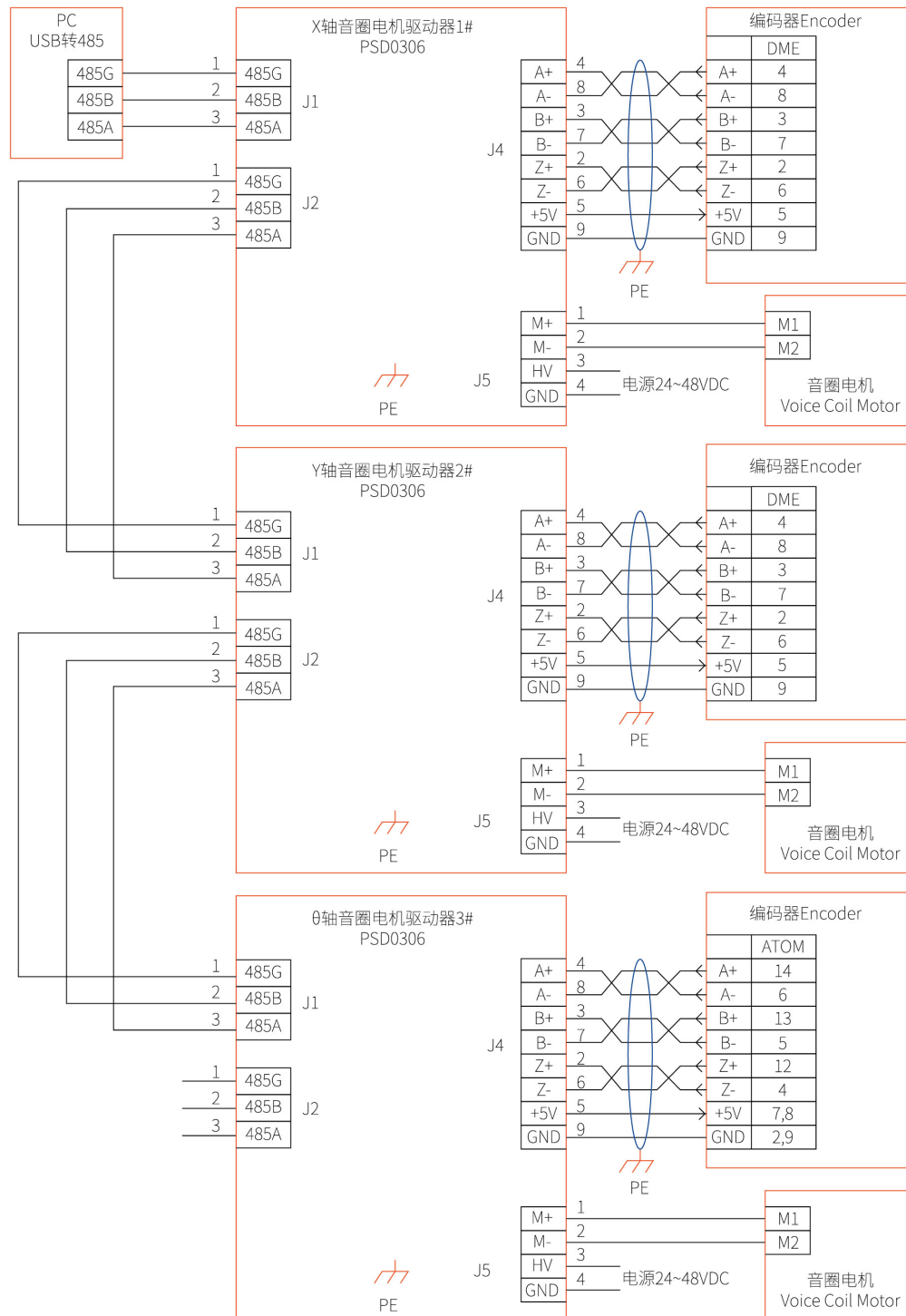
适用模组系列/Matched Series	DKW85,DKW90,DKW100,DKW100-Z,DKW118,DKW140,DKW165
控制方式/Control Interface	脉冲/方向(Pulse/Dir),正反脉冲(CW/CCW)
信号类型/Signal Type	单端信号/Single Ended
脉冲频率/Pulse Frequency	1 MHz
控制电源/Control Power	24 VDC
主电源/Main Power	220 VAC



DKW XYθ音圈电机对位平台接线图 DKW XYθ VCM Stage Wiring

适用模组系列/Matched Series DKW XYθ 100P, DKW XYθ 160P

控制方式/Control Interface RS485, Modbus-RTU



广东德康威尔科技有限公司

GUANGDONG DYNAMIKWELL TECHNOLOGY CO.,LTD.

Add: 广东省汕尾市海丰县城东生态科技城德康威尔科技园

Eco-Tech City, Chengdong Town, Haifeng County, Shanwei City, Guangdong Province, China

深圳德康威尔科技有限公司

SHENZHEN DYNAMIKWELL TECHNOLOGY CO.,LTD.

Add: 深圳市宝安区西乡铁岗水库路铁岗水库牌坊左侧卓越大厦1~2楼

G~1st Floor, Zhuoyue Building, Tiegang Reservoir Road,

Xixiang Bao'an District, Shenzhen City, Guangdong Province, China

E-mail: sales@dynamikwell.com Fax: 86-755-23328516 Tel: 400-830-1585

德康威尔(苏州)智能科技有限公司

SUZHOU DYNAMIKWELL TECHNOLOGY CO.,LTD.

Add: 苏州工业园区旺墩路135号融盛商务中心1幢806-807室

806-807 Room, No.135 Wangdun Road, Suzhou City, Jiangsu Province, China

E-mail: xhua@dynamikwell.com Tel: 0512-67429851 / 132-8510-8666