



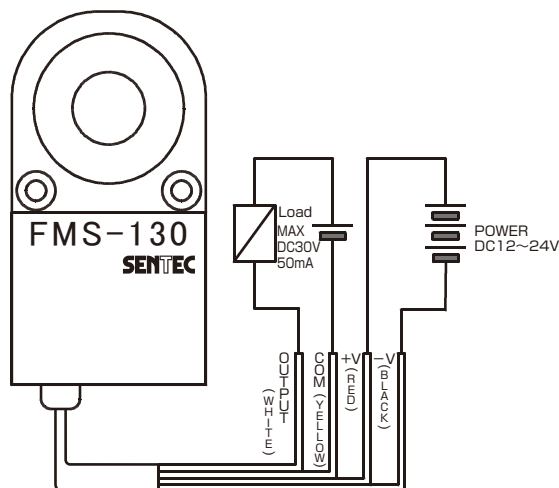
- Compact design and amplifier Integration type
- Low cost
- Detect only metals stably
- NO or NC switchable
- Off-delay (0 or 200msec) switchable
- mutual interference prevention function
- CE compliant

SPECIFICATIONS

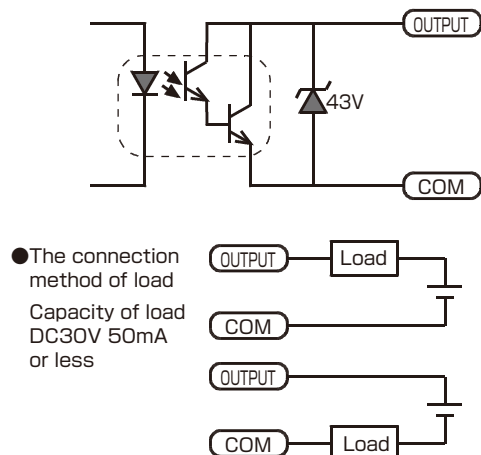
ITEM	TYPE	FMS-130-10	FMS-130-15	FMS-130-20	FMS-130-25
DETECTUON HOLE DIAMETER		φ10mm	φ15mm	φ20mm	φ25mm
DETECTABLE OBJECT		Magnetic metal(Detection sensitivity falls non-magnetic metal)			
MINIMUM DETECTABLE OBJECT		φ2mm Steel ball	φ3mm Steel ball	φ4mm Steel ball	φ5mm Steel ball
INDICATOR		Power supply indicator(Green LED) Detection indicator(Red LED)			
SENSITIVITY ADJUSTMENT		3 Rotation Tolimner			
NON-CONTACT OUTPUT		Photocoupler Output 50mA or less (DC30V or less)			
RESPONSE		5ms or less			
FUNCTION	OUTPUT	NO or NC Choose			
	OFFDELAY	0ms or 200ms(Time Accuracy ±10% or less) Choose			
	MUTUAL INTERFERENCE	Standard Frequency or Inter-Frequency Choose			
AMBIENT TEMPERATURE		0~60°C 85%RH or less ,There must be no dew condensation.			
POWER		DC12~24V ±10% ripple rate 10% or less			
CONSUMPTION CURRENT		50mA or less			
INSULATION RESISTANSE		Connection line-Case Between 20MΩ or more			
ERECTRIC STRENGTH		Connection line-Case Between AC1500V 1min,DC500V 1min			
VIBRATION STRNGTH		10~55Hz Amplitude 1.5mm X,Y,Z for all directions 2h			
CE-Marking Correspondence article		EMC directive(2004/108/EC) Conformity standard:EN61000-6-4(EMI),EN61000-6-2(EMS)			

SPECIFICATIONS

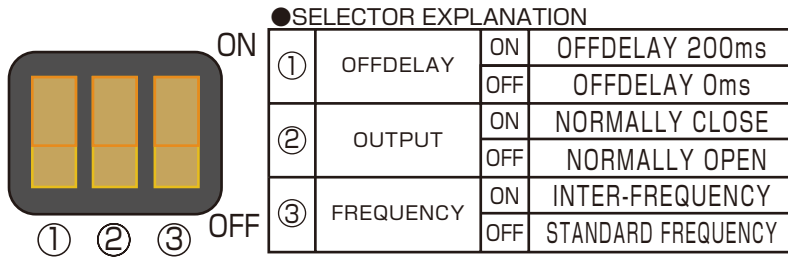
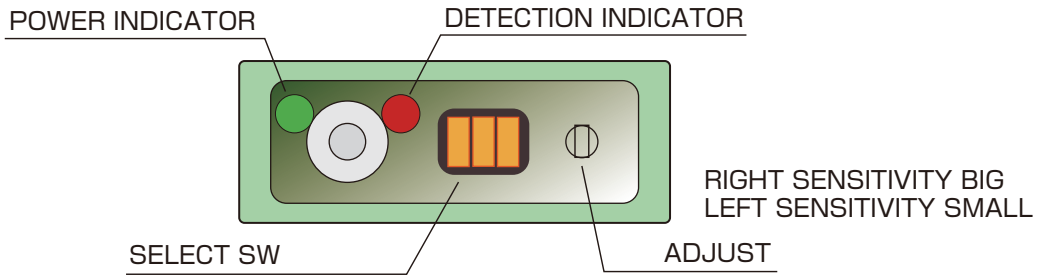
WIRING CONNECTION



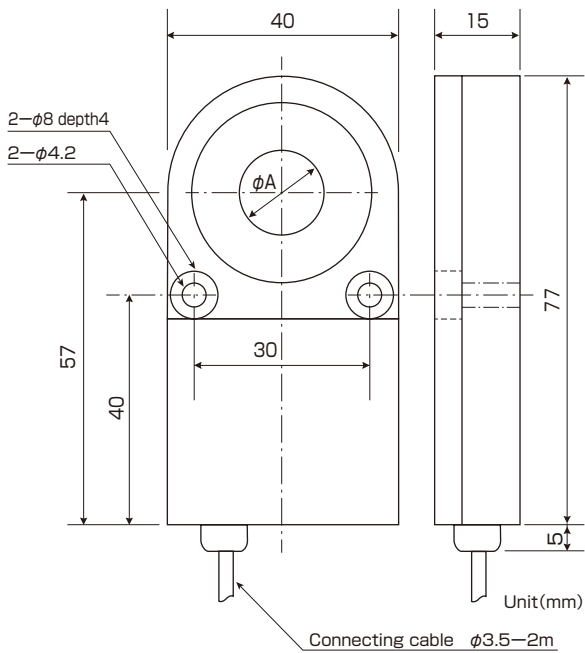
OUTPUT



OPERATION SIDE EXPLANATION



CONTROLLER DIMENSIONS



	FMS-130-10	FMS-130-15	FMS-130-20	FMS-130-25
φA	φ10	φ15	φ20	φ25