

极限真空	8kPa[abs] 以下
流量	120-330L/min (50Hz)
Ultimate vacuum	8kPa[abs] or low
Capacity	120~330L/min (50Hz)



特长

- 在极限真空度 (8kPa 以下) 时能连续运行
- 运行真空度高、适合于电子元器件等小型零部件的自动化组装设备

性能

型号 Model KHA□-P-□□	设计排气量 Designed pumping capacity		到达真空度 Ultimate vacuum (※2) (kPa[abs])	配管连接孔径 Suction exhaust port diameter	电源 Motor voltage				噪音 Noise (dB)		装载电机 (kw) Motor	重量 Mass (Kg)	
	(L/min)	(※1)			单相 single phase		三相 Three phase		50Hz	60Hz		单相 Single phase	三相 Three phase
					100V	220V	220V	380V					
200/200A-V-01 200/200A-V-03	120	145	8	Rc1/4	○	○			61	62	0.25	15	
							○	○	61	62			13
400/400A-V-01 400/400A-V-03	220	260		Rc3/8	○	○			63	66	0.4	28	
								○	○	63		66	
750/750A-V-03	330	400		Rc3/8					67	70	0.75		33

Features

- It is possible to make continuous operation at the reached degree of vacuum(8kPa or less)
- Since the operating degree of vacuum is high, they are most suitable to use with the automatic machines(mounting machine,etc.) for small parts such as electronics parts.

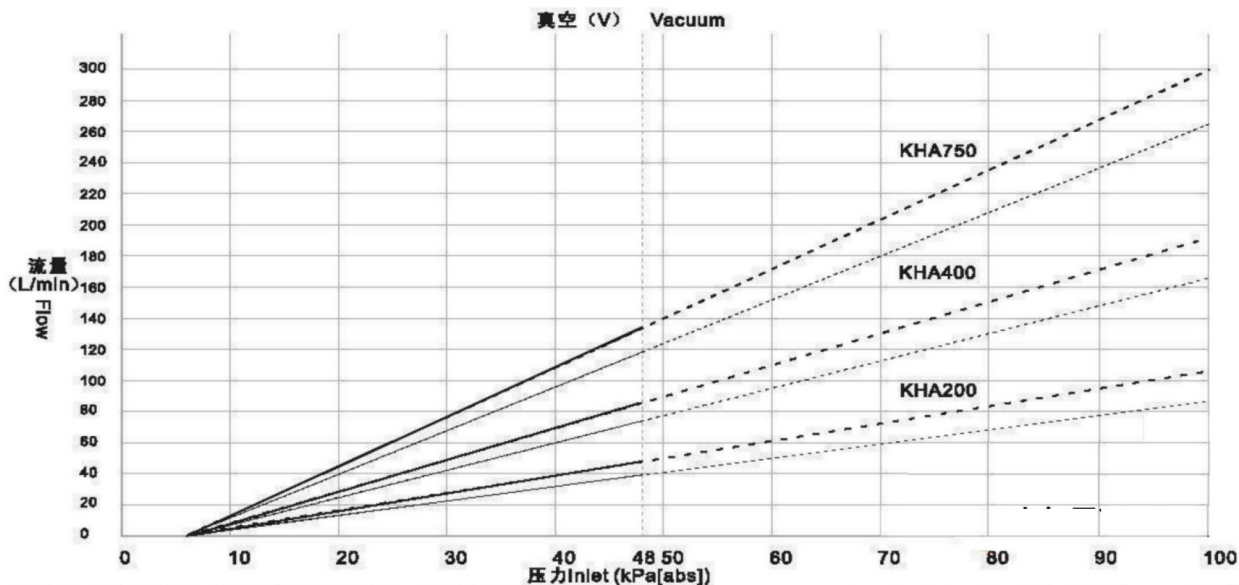
Specifications

- ※1 设计排气量：由容积所要求的理论值。实际流量参考性能实测数据。
 - ※2 到达真空度：泵所能达到的极限真空度，KHA 可在到达真空度下连续运行。
 - ※ 使用压力范围：48kPa [abs]- 到达压力
 - ※ 允许脉动范围：13.3kPa/s 以内
 - ※ 也备有排气管道配管型 (KHA 200A.400A.750A)。管道配管的允许阻力：25 kPa 以下 (不可以用于排气)
 - ※ 使用环境 (吸入空气) 条件：温度：0~40C、湿度：通常湿度 (65 ± 20%)，
 - ※ 因为高真空泵在压缩比高时、泵内部容易结露、所以必须要采取以下措施防止生锈。
 - 试运行、吸气侧加上 48 kPa[abs] 以下的负荷、连续运行 5 分钟以上。
 - 试运行和工作时间在 5 分钟以内时，为了除去凝结露水、开放吸气侧、进行 10~15 分钟的空 (干燥) 运行。
 - ※ 电源电压的允许波动范围为额定电压 ± 10%。请设置过负荷保护器 (热敏继电器等)。
- 设定值：请以电机标牌上记载的额定电流值为标准。

- ※1 Design displacement: Logic value calculated from the cubic volume.regarding the actual flow rate, refer to the actual measurement data of performances.
- ※2 Pressure level where continuous operation is possible at the maximum degree of vacuum reached by the pump.
- ※Using pressure range:48kPa<abs> ~Reaching pressure.
- ※Allowable pulsation range:within 13.3kPa/s.
- ※ Those types with which duct piping can be used for the exhaust circuit are also available.(KHA 200A.400A.7 50A).
- ※Allowable resistance of the duct piping:25kPa or less (Cannot be used for exhaust gas)
- ※As the intake gas,use clean air of ordinary temperature and ordinary humidity whenever possible.[Using environmental conditions (intake air) should be 0~40C in the temperature and 65 ± 20% in the humidity].
- ※Since high degree vacuum pumps possess higher compression ratio and more dewing occurs inside the pump,it is necessary to take rusting trouble preventive measure as follows.
- ※As the test operation,make continuous operation for more than 5 minutes applying a load or 48kPa[abs] or less to the suction side;
- ※If in test operation or the regular operation time is less than 5 minutes,make no load (dry) operation for 10 to 15 minutes opening the suction side in order to remove the dewing water.
- ※The allowable variation range of the supply voltage should be rated voltage(10%).
- ※Install an overload protector (thermal relays,etc.).Setting value:Use the rated current value being indicated on the specification plate of the motor as target value.

性能实测数据 (-60Hz -50Hz)

Performance data



※ 性能实测数据表示带过滤器的数据。配管连接时, 由于有阻力, 流量会有所不同。

※ 要在 48 kPa[abs] 以上 (性能数据的虚线) 时的连续运行, 则请预先与代销商联系。

※ 在 1 大气压下 20°C。

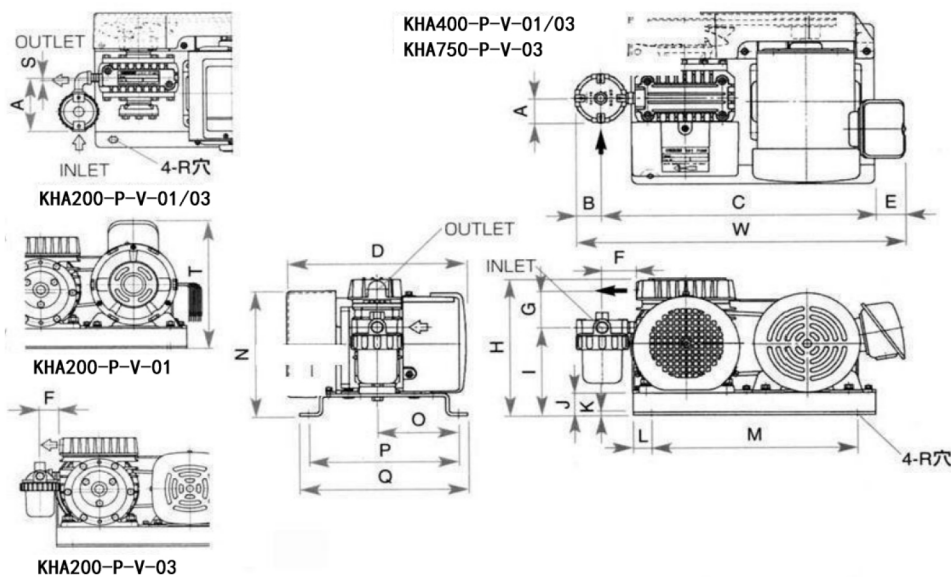
※ Performance curves show the date with a filter. Air flow may differ depending on piping resistance.

※ For application over 48kPa [abs] please ask for ORION dealers before use.

※ Under one normal atmospheric pressure 20°C .

外形尺寸 (尺寸单位: mm)

Outer dimensions (Unit:mm)



型式	H	D	W	A	B	C	E	F	G	I	J	K	L	M	N	O	P	Q	R	S	T	U
200-P-V-01	(180)	(225)	(385)	(87)	(25)	(290)	(39)	(31)	51.4	117	32	3.2	25	240	164	1005	180	205	4	207	-	-
200-P-V-03	(180)	(223)	(385)	(87)	(25)	(290)	(39)	(31)	51.4	117	32	3.2	25	240	164	1005	180	205	4	207	-	-
400-P-V-01	(199)	(264)	(408)	(35)	(42)	(330)	(25)	(47)	55	127	32	4.5	25	280	180	111	205	230	∅9	-	-	-
400-P-V-03	(199)	(249)	(433)	(35)	(42)	(330)	(25)	(47)	55	127	32	4.5	25	280	180	111	205	230	∅9	-	-	-
750-P-V-03	(234)	(297)	(474)	(35)	(44)	(380)	(34)	(51)	88	144.5	32	4.5	30	300	198	88.5	215	240	∅10	-	-	-