



A008166

GGLR系列隔离开关熔断器组

GGLR SERIES SWITCH - DISCONNECTOR- FUSE

使用说明书

INSTRUCTIONS



SECURELUCKY

固安祥®

北京人民电器厂有限公司
BEIJING PEOPLE'S ELECTRIC PLANT CO.,LTD.

1、适用范围 Application range

GGLR系列隔离开关熔断器组（以下简称开关），适用于交流50Hz、额定电压至600V、额定电流至630A的工业企业配电网中；广泛用于具有高短路电流的配电电路和电动机电路中，用作手动不频繁接通与分断电路或电气隔离之用；可带负荷操作，并作电路短路之中。

开关造型美观、新颖简洁，结构简单、操作方便，符合IEC60947-3、GB14048.3标准，是同类产品的最佳选择。

GGLR series switch-disconnector-fuse (here after short as switch) is applicable for industrial distribution system, which is AC 50 Hz, rated voltage is 660V and rated current is 630A. The switch is widely used high short-circuit current distribution circuit and motor circuit, playing the role of making/breaking circuit occasionally and isolation. GGLR series switch protect the circuit against the damage of short-circuit and could on-load operate.

GGLR series switches comply with the demands of the following standards: IEC60947-3, GB14048.3. GGLR series switch is feature with beautiful and compact external appearance, simple structure and easy to operation, so it is the best selection in other like products.

2、正常工作条件 Normal service conditions

1、周围空气温度：不高于+40℃，不低于-5℃，24h内的平均温度不超过+35℃。

2、海拔：安装地点的海拔不超过2000m。

3、相对湿度：在周围最高温度为 +40℃时，空气的相对湿度不超过50%，在较低的温度下可以允许有较高的相对湿度（如：20℃时可达90%），但应考虑因温度变化而偶尔产生在开关表面上的凝露。

4、周围环境污染等级：3级。

5、安装类别：Ⅲ类。

6、安装条件：开关应垂直安装在无显著摇动与冲击振动的地方及无爆炸危险的介质中，且介质中无足以腐蚀金属和破坏绝缘的气体与尘埃。

7、非正常工作条件下的使用场合，请与我公司协商。

1、The ambient air temperature dose not exceed +40℃ and the lower limit of the ambient air temperature is -5℃, meanwhile, its average over a periods of 24h does not exceed +35℃;

2、The altitude of the site of installation does not exceed 2000m;

3、The relative humidity of he air does not exceed 50% at a maximum temperature of +40℃. Higher relative humidity may be permitted at lower temperature, e.g. 90% at +20℃. Special measures may be necessary in cases of occasional condensation due to variations in temperature;

4、Pollution degree: 3;

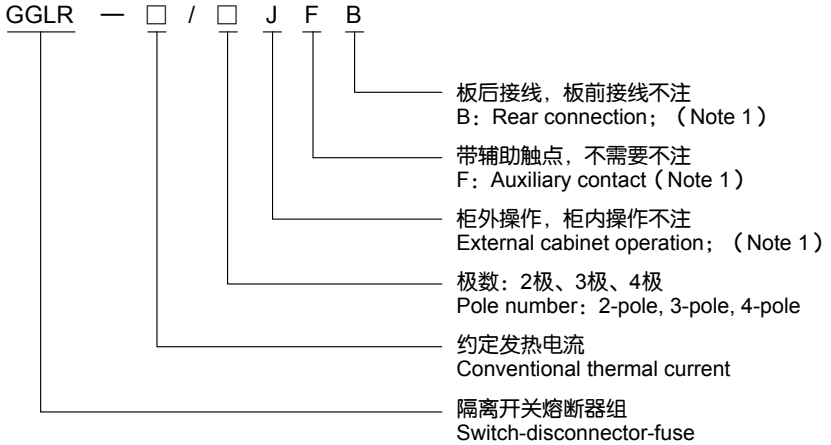
5、Mounting category: III;

6、Mounting conditions:

The switch should be mounted vertically, where without notable impact and vibration and there must be not any gas which would corrode metal or any conducting dust which would destroy the insulation.

7、Please contact with the manufacturer if used in abnormal service conditions.

3、产品型号含义 Serial number explanation



Note 1: options, omit if not selected

4、结构特征 Characteristic

1、开关采用玻璃纤维不饱和聚脂模塑料及手动操作手柄，具有很高的介电性能、防护能力及可靠的操作安全性。

2、开关采用弹簧蓄能、圆锥齿轮传动的加速关合机构及同时接通与分断并联多断点的触头结构，极大的提高了产品的电气性能与机械性能。

3、开关160A、250A、400A采用模块式设计，630A采用整体式结构，可确保带负载操作及通断可靠的过电流与短路安全保护。

4、开关有2极、3极、4极（3极+可通断中性极）之分。

5、手柄可直接装在开关上操作（简称柜内操作），也可通过加长轴在配电柜门外操作（简称柜外操作）。

6、可根据需要提供常开常闭辅助触点及板后接线方式。

1、High dielectric capacity, high protective capacity and operational characteristic reliably.

2、The mechanical and electrical characteristic are maximal improved, thanks to the advanced construction.

3、Modular design is adopted for 160A, 250A and 400A switch and 630A is intergral type, so on-load operation and over-current and short-circuit protection could be guaranteed.

4、The switch could be 2-pole ,3-pole and 4-pole(3pole add N-pole).

5、Handle could be mounted on the switch(internal cabinet operation) or operation outside of the cabinet via a lengthen handle(external cabinet operation).

6、Opening/closing auxiliary contact and rear connection could be provided.

5、主要技术参数 Technical data

1、GGLR系列隔离开关熔断器组的主要技术参数（见表1）

Technical data of GGLR as Table 1

约定发热电流 I _{th} Conventional thermal current		160A	250A	400A	630A
额定绝缘电压 U _i Rated insulation voltage		690V			
额定工作电压 U _e Rated operational voltage		400V、690V			
额定频率及使用类别 Rated frequency and utilization category		50Hz、AC-23B			
额定工作电流 I _e Rated operational current	400V/AC-23B	160A	250A	400A	630A
	660V/AC-22B	100A	200A	315A	425A
额定接通能力（400V/AC-23）rms Rated making capacity		1600A	2500A	4000A	6300A
额定分断能力（400V/AC-23）rms Rated breaking capacity		1280A	2000A	3200A	5040A
额定限制短路电流（r.m.s） Rated limited short-circuit current		50KA	50KA	50KA	50KA
机械寿命（次） Mechanical durability（times）		3000	3000	2000	1000
电寿命（次） Electrical durability（times）		1000	1000	800	500
操作力矩（N.m） Actuating moment		10	15	20	30
熔断器损耗功率 P Fuse power loss		12W	24W	34W	48W
重量（三极）Kg Weight（3-pole）		1.9	3.3	4.8	14.6
辅助开关的主要参数 Main parameter of auxiliary switch		50Hz、AC-15、220V、2A			

2、开关与熔断器的配用关系（见表2）

Fuse parameters as Table 2

约定发热电流 I _{th} Conventional thermal current	配用熔断体尺码 Fuse type	熔断器额定电流 (A) Rated current of fuse
160A	NT00	10,16,25,32,40,63,80,100,125,160
250A	NT1	80,100,125,160,200,225,250
400A	NT2	125,160,200,225,250,300,315,355,400
630A	NT3	315,355,400,425,500,630

注：当开关用于电动机电路时，允许熔断器的额定电流大于开关的额定工作电流。

Notes: when the switch is used in motor circuit, the rated current of fuse could be higher than that of the switch.

6、外形与安装尺寸 Overall and mounting dimensions

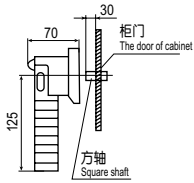
1、GGLR系列开关的外形与安装尺寸（见表3、图1—2）

Overall and mounting dimensions of GGLR series switch (Table 3, Figure 1 and 2)

开关型号 Type	极数 Pole number	外形尺寸 Overall dimensions (mm)					安装尺寸 Mounting dimensions (mm)			
		A	B	C	D	E	a	b	Φc	h
GGLR-160	2极 2-pole	126	162	128	37	115	/	125	6	68
	3极 3-pole	163	162	128	37	115	37	125	6	68
	4极 4-pole	200	162	128	37	115	74	125	6	68
GGLR-250	2极 2-pole	175	196	148	60	145	/	140	6	92
	3极 3-pole	235	196	148	60	145	60	140	6	92
	4极 4-pole	295	196	148	60	145	120	140	6	92
GGLR-400	2极 2-pole	211	205	150	67	145	/	150	6	122
	3极 3-pole	278	205	150	67	145	67	150	6	122
	4极 4-pole	345	205	150	67	145	134	150	6	122
GGLR-630	3极 3-pole	346	300	270	80	190	250	250	9	38
	4极 4-pole	426	300	270	80	190	330	250	9	38

图1 GGLR—160, 250, 400A隔离开关熔断器组
Figure1 GGLR-160,250 and 400A switch-disconnector-fuse

(柜外操作)
External cabinet operation



(柜内操作)
Internal cabinet operation

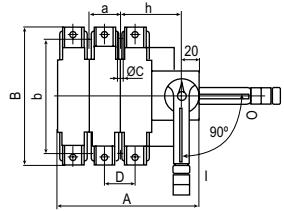
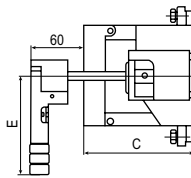
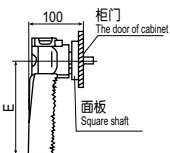
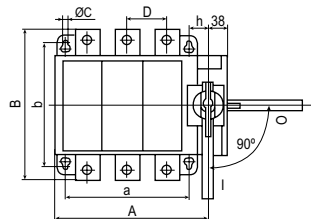
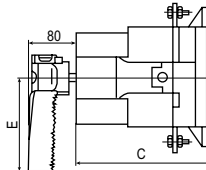


图2 GGLR—630A隔离开关熔断器组
Figure2 GGLR-630A switch-disconnector-fuse

(柜外操作)
External cabinet operation

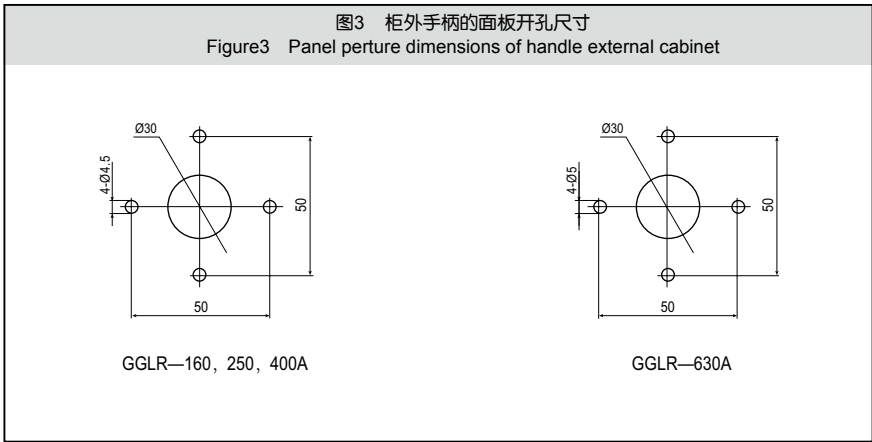


(柜内操作)
Internal cabinet operation



2、柜外操作手柄的面板开孔尺寸（见图3）

Panel perture dimensions of handle external cabinet (figure 3)



地 址：北京大兴工业开发区金苑路29号

Address: JinYuan Road 29, Daxing Industry Development Zone, Beijing 102600, CHINA

总机电话：010—61272222 61272828 61274149

Telephone Exchange

销售电话：010—69298558 61271690 69202112 61271691

Sales Telephone

技术支持：010—61271718

Technical Support

售后服务：010—61274733

After-sale Service

传 真：010—69242058

Fax

邮 编：102600

Post Code

www.securelucky.com.cn