

GAPDH Mouse Monoclonal Antibody

Cat No: GM0002

Size: 100ul

Source: Mouse

Reactivity: H, M, R, Mk, D, C, Rb, P, S, Insect, Yeast

Applications: WB, IH

*Application Key:

E- ELISA, WB - Western blot, IH - Immunohistochemistry, IF - Immunofluorescence, FC - Flow cytometry, IC - Immunocytochemistry, IP - Immunoprecipitation, ChIP - Chromatin Immunoprecipitation, EMSA - Electrophoretic Mobility Shift Assay, BL - Blocking, SE - Sandwich ELISA, CBE - Cell-based ELISA, RNAi - RNA interference

*Species Reactivity Key:

H - Human, M - Mouse, R - Rat, B - Bovine, C - Chicken, D - Dog, G - Goat, Mk - Monkey, P - Pig, Rb - Rabbit, S - Sheep, Z - Zebrafish

datasheet

Description: Mouse monoclonal antibody to GAPDH

Immunogen: KLH-conjugated synthetic peptide encompassing a sequence of human GAPDH. The exact sequence is proprietary.

Clonality: Monoclonal

Form: Liquid in 0.42% Potassium phosphate, 0.87% Sodium chloride, pH 7.3, 0.2% BSA, 30% glycerol, and 0.01% sodium azide.

Dilution: WB (1/3000 - 1/ 10000), IH (1/ 100 - 1/200)

Gene Symbol: GAPDH

Alternative Names: GAPD; Glyceraldehyde-3-phosphate dehydrogenase; GAPDH; eptidyl-cysteine S-nitrosylase GAPDH

Entrez Gene (Human): 2597

Entrez Gene (Mouse) : 100042025

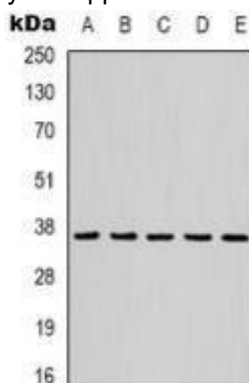
Entrez Gene (Rat) : 24383

SwissProt (Human): P04406

SwissProt (Mouse) : P16858

SwissProt (Rat) : P04797

Storage/Stability : Shipped at 4°C. Upon delivery aliquot and store at -20°C for one year. Avoid freeze/thaw cycles.



Western blot analysis of GAPDH expression in Hela (A), mouse brain (B), rat brain (C), rabbit muscle (D), sheep muscle (E) whole cell lysates.