



Anti-mCherry-tag Antibody (抗 mCherry 标签抗体)

Product Information

品名	货号	规格
Anti-mCherry-tag Antibody (抗 mCherry 标签抗体)	GM006	100ul

Product description

Source:	Mouse
Reactivity:	N/A
Applications:	WB, IP
*Application Key	E- ELISA, WB - Western blot, IH - Immunohistochemistry, IF - Immunofluorescence, FC - Flow cytometry, IC - Immunocytochemistry, IP - Immunoprecipitation, ChIP - Chromatin Immunoprecipitation, EMSA - Electrophoretic Mobility Shift Assay, BL - Blocking, SE - Sandwich ELISA, CBE - Cell-based ELISA, RNAi - RNA interference
*Species Reactivity Key	H - Human, M - Mouse, R - Rat, B - Bovine, C - Chicken, D - Dog, G - Goat, Mk - Monkey, P - Pig, Rb - Rabbit, S - Sheep, Z - Zebrafish

Datasheet

Description: Mouse monoclonal antibody to GFP-tag

Immunogen: Recombinant protein corresponding to GFP-tag.

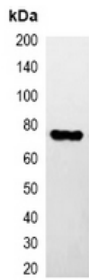
Clonality: Monoclonal

Form: Liquid in 0.42% Potassium phosphate, 0.87% Sodium chloride, pH 7.3, 30% glycerol, and 0.01% sodium azide.

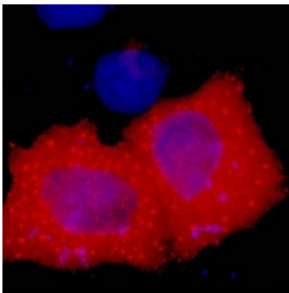
Dilution: WB (1/2000 - 1/5000), IP (1/100 - 1/200)

Storage/Stability : Shipped at 4°C. Upon delivery aliquot and store at -20°C for one year. Avoid freeze/thaw cycles.

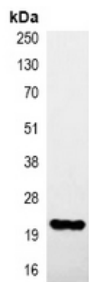
Validation



Western blot analysis of over-expressed HA-tagged protein in 293T cell lysate.



Immunofluorescent analysis of HA-tag staining in 293T cells transfected with a HA-tag protein. Formalin-fixed cells were permeabilized with 0.1% Triton X-100 in TBS for 5-10 minutes and blocked with 3% BSA-PBS for 30 minutes at room temperature. Cells were probed with the primary antibody in 3% BSA-PBS and incubated overnight at 4 °C in a humidified chamber. Cells were washed with PBST and incubated with a DyLight 594-conjugated secondary antibody (red) in PBS at room temperature in the dark. DAPI was used to stain the cell nuclei (blue).



Immunoprecipitation of HA-tagged protein from HEK293T cells transfected with vector overexpressing HA tag, using Anti-HA-tag Antibody.

