



## Anti-Strep-tag II Antibody (抗 Strep 标签 II 抗体)

### Product Information

品名	货号	规格
Anti-Strep-tag II Antibody (抗 Strep 标签 II 抗体)	GM011	100ul

### Product description

Source:	Mouse
Reactivity:	N/A
Applications:	WB, IP
*Application Key	E- ELISA, WB - Western blot, IH - Immunohistochemistry, IF - Immunofluorescence, FC - Flow cytometry, IC - Immunocytochemistry, IP - Immunoprecipitation, ChIP - Chromatin Immunoprecipitation, EMSA - Electrophoretic Mobility Shift Assay, BL - Blocking, SE - Sandwich ELISA, CBE - Cell-based ELISA, RNAi - RNA interference
*Species Reactivity Key	H - Human, M - Mouse, R - Rat, B - Bovine, C - Chicken, D - Dog, G - Goat, Mk - Monkey, P - Pig, Rb - Rabbit, S - Sheep, Z - Zebrafish

### Datasheet

**Description:** Mouse monoclonal antibody to GFP-tag

**Immunogen:** Recombinant protein corresponding to GFP-tag.

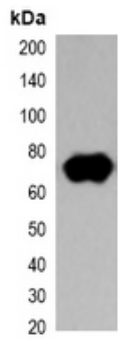
**Clonality:** Monoclonal

**Form:** Liquid in 0.42% Potassium phosphate, 0.87% Sodium chloride, pH 7.3, 30% glycerol, and 0.01% sodium azide.

**Dilution:** WB (1/2000 - 1/5000), IP (1/100 - 1/200)

**Storage/Stability :** Shipped at 4°C. Upon delivery aliquot and store at -20°C for one year. Avoid freeze/thaw cycles.

## Validation



Western blot analysis of over-expressed Strep-tagged protein II in 293T cell lysate.

