



彩色预染蛋白 Marker 10-260

品名	货号	规格	储存温度
彩色预染蛋白 Marker 10-260	JX106201	250ul	-20° C

Introduction

Multicolor Broad Range Protein Ladders are a prestained mixture of 10 recombinant proteins ranging from 10 kDa to 260 kDa. Four different chromophores are bound to the proteins, producing a brightly colored ladder in an easy-to-remember pattern. The protein ladder is conveniently packaged and ready to use with no heating, diluting or additional reducing agent necessary.

Lot-to-lot variation of the apparent molecular weight of prestained proteins is ~5%.

Storage Buffer: 62.5 mM Tris•H₃PO₄ (pH 7.5 at 25°C), 1 mM EDTA, 2% (w/v) SDS, 10 mM DTT, 1 mM NaN₃ and 33% (v/v) glycerol.

Migration Patterns of Multicolor Broad Range Protein Ladder

Gel type		Tris-Glycine						Tris-Acetate		Bis-Tris						
Gel concentration		4-20%	8-16%	10-20%	8%	10%	12%	15%	3-8%	7%	4-12%		10%		12%	
Running buffer		Tris-Glycine						Tris-Acetate		MOPS	MES	MOPS	MES	MOPS	MES	
		Apparent Molecular Weights, kDa														
% length of gel ↓	10															
	20	260	260	140	140	100	100	70	260	225	225	235	225	235	225	235
	30	140	140	100	100	70	70	50	140	120	115	120	115	120	115	120
	40	100	100	70	70	50	50	40	100	85	80	80	80	80	80	80
	50	70	70	40	40	35	35	35	70	65	65	70	65	70	65	70
	60	50	50	35	35	25	25	25	50	50	50	50	50	50	50	50
	70	40	40	25	25	15	15	15	40	35	35	35	35	35	35	35
	80	35	35	15	15	10	10	10	35	25	25	25	25	25	25	25
	90	25	25	10	10	10	10	10	25	15	15	15	15	15	15	15
	100	15	15	10	10	10	10	10	15	10	10	10	10	10	10	10

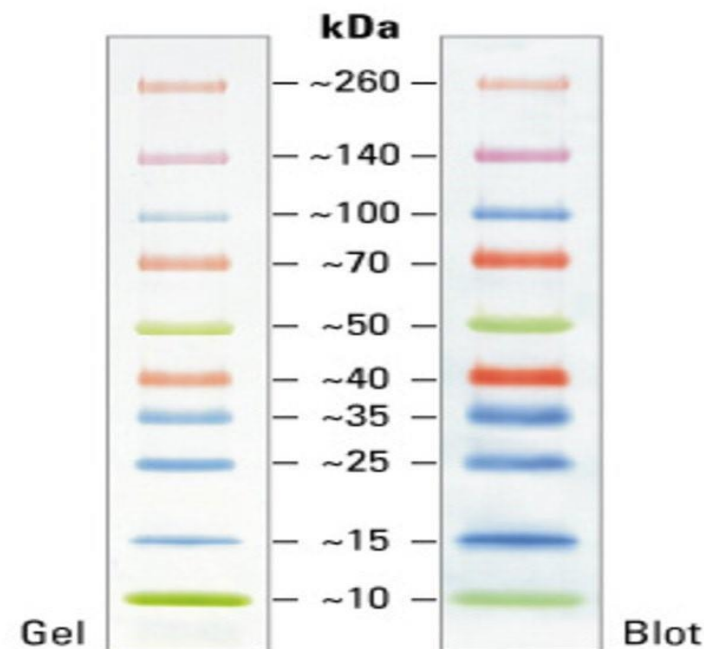
Recommendations for Loading

1. Thaw the ladder at room temperature for a few minutes to dissolve precipitated solids. **Do not boil!**
2. Mix gently, but thoroughly, to ensure that the solution is homogeneous.
3. Load the following volumes of the ladder on an SDS-polyacrylamide gel:
 - 10 μ L per well for minigel,
 - 20 μ L per well for large gel.Use the same volumes for Western blotting.
The loading volumes listed above are recommended for gels with a thickness of 0.75-1.0 mm. The loading volume should be doubled for 1.5 mm thick gels.

Important Notes

- In low-percentage gels (< 10 %), the low-molecular weight proteins in the ladder may migrate with the dye front.
- Longer transfer times or higher transfer voltages may be required for Western blotting of large (>100 kDa) proteins.
- Prestained proteins can have different mobilities in various SDS-PAGE-buffer systems. However, they are suitable for approximate molecular weight determination when calibrated against unstained standards in the same system. See the table provided for migration patterns in different electrophoresis conditions.

Multicolor Broad Range Protein Ladder



4-20 % Tris-glycine SDS-PAGE

官方网址: <http://www.genesion.com.cn>

订货热线: 4006169114、020-84224925

Email: whiga22@126.com

