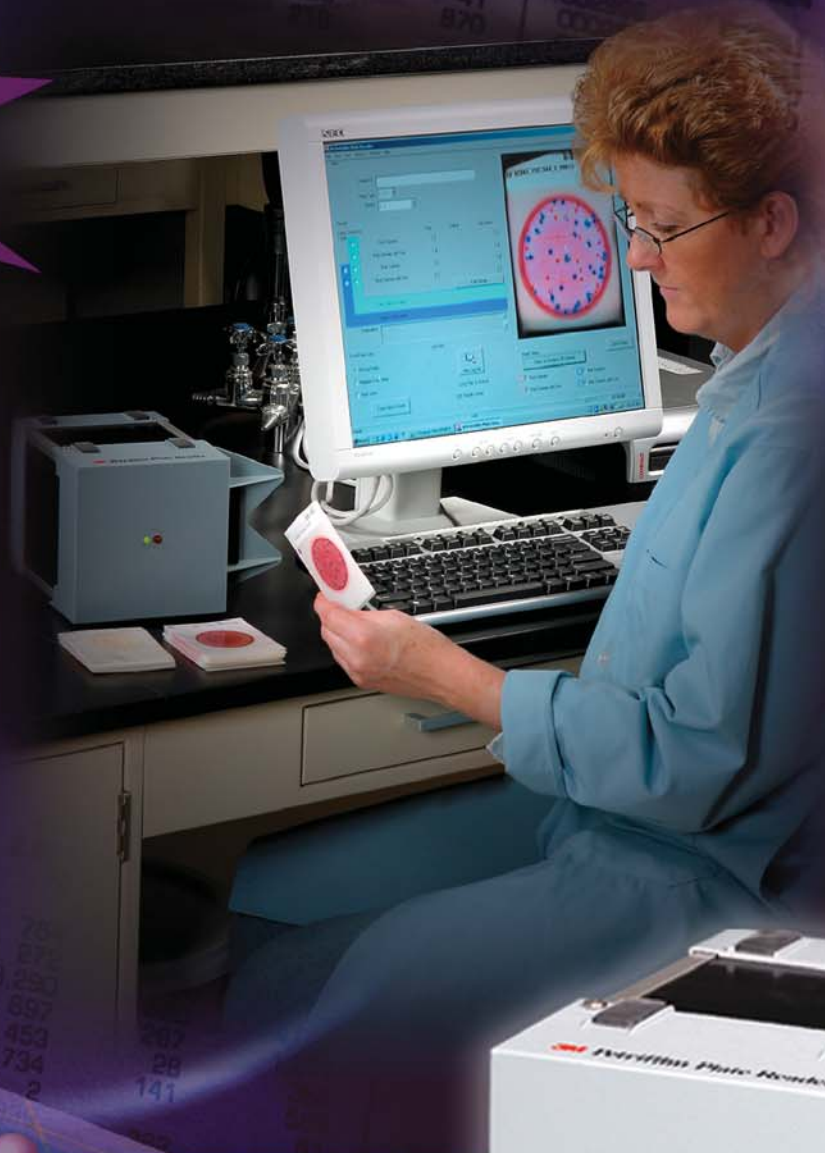


3M Petrifilm™ Plate Reader

Consistent, automated reading and recording of results of 3M™ Petrifilm™ Plates in 4 seconds.

READS
AC, CC and
EC/CC PLATES*

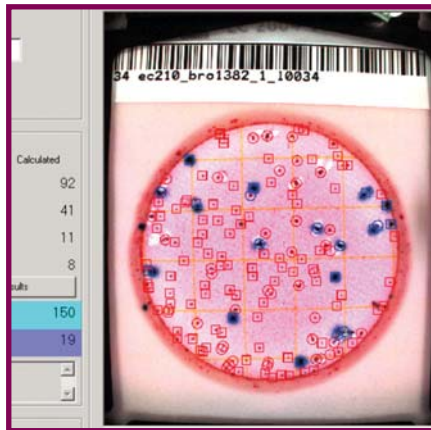


*Reads 3M Petrifilm Aerobic Count, Coliform Count and E. coli/Coliform Count Plates

3M Microbiology

Fast, automated reading of 3M™ Petrifilm™ Plates increases productivity, reduces costs and eliminates variation between lab techs.

- Reads the top 3 most common Petrifilm Plates (aerobic count, coliform count, and E. coli/coliform count) to cover the majority of your plate reading.
- Consistent reading of plates eliminates variation between lab techs.
- Fast reading of Petrifilm Plates in 4 seconds¹ increases productivity flow and reduces labor costs.
- System displays results and color image of the plate on the computer screen, marking the colonies for easy verification.
- Automatically calculates counts based on the dilution entered for quick results.
- Availability of User ID and Password options control access to system and provide documentation for audit purposes.
- With appropriate user authorization, editing capability is available to edit counts quickly and easily.
- Ability of system to read 128 Symbology bar code labels provides fast, automatic input of plate information.
- Interpretation parameters are preset at factory—no need to reprogram for different food or test types.



Aerobic Count Plates



Coliform Count Plates

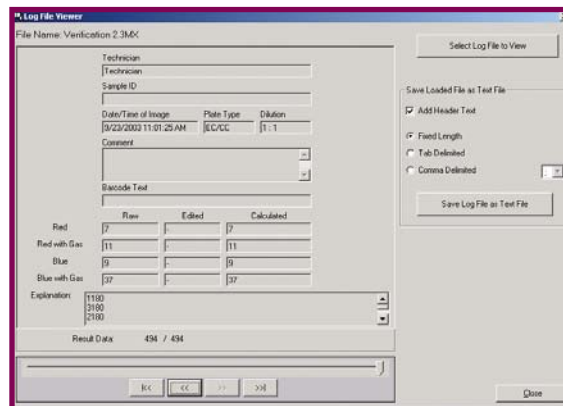


E. coli/Coliform Count Plates

¹Based on using system requirements specified.

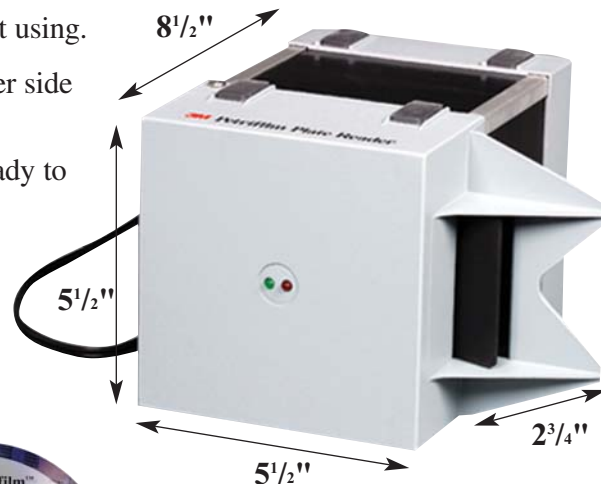
Automatic data storage saves time, eliminates transcription errors, improves compliance, and allows for easy exporting of data.

- Automatically exports data into a Microsoft® Excel spreadsheet and/or uneditable log file—eliminating transcription errors and reducing keying time.
- Unchangeable log file provides an historical record of data for audit purposes and enables FDA 21CFRPart11 compliance.
- Automatic transfer of log file data into a text file allows for easy exporting of data into other information management systems.
- Mapping capability enables customized transfer of specific data into new or existing Microsoft® Excel spreadsheets providing the ability to create customized reports.
- Actual color image of plate can be saved and stored for further interpretation and record keeping.



Designed to be easy to set up and easy to use— Eliminating long training sessions.

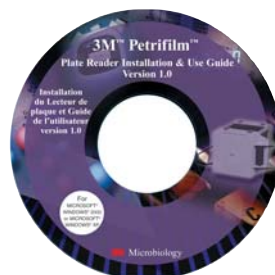
- Compact unit takes up minimal lab space and is easy to store when not using.
- Plate inserts into one side of machine and automatically ejects out other side when interpretation is complete—minimizing plate handling.
- Red and Green LED lights on front of unit indicate when system is ready to read next plate—eliminating the guesswork.
- Rubber feet on top and bottom of unit provides versatility for right or left-handed users.
- Hinged door on front of reader provides easy access for cleaning.



Product Dimensions

Windows-based software is Easy to Install and Easy to Use

- Windows-based CD-Rom software installs on a PC using the wizard to assist on installation—reducing the need for IT assistance.
- Installation and Use CD-Rom provides easy instructions for using the system.
- System Verification card for easy calibration verification.
- Technical Support is available by calling 1-800-328-6553, Option 4 (US only).



System Requirements (Not Included):

- Microsoft® Windows 2000/XP
- Microsoft® Excel 2000 or higher (to use spreadsheet option)
- USB2 Port
- 256MB RAM
- CD-Rom Drive
- 1.5GHz CPU
- 5GB disk space needed (to allow for saving data and images)



Recycled Paper
40% pre-consumer
10% post-consumer
Petrifilm is a trademark of 3M.

Microsoft is a registered trademark of Microsoft Corp.



3M Microbiology

3M Center,
Building 275-5W-05
St. Paul, MN 55144-1000
USA
1-800-228-3957
microbiology@mmm.com
www.3M.com/microbiology

3M Europe

Laboratoires 3M Santé
Boulevard de l'Oise
95029 Cergy Pontoise Cedex
France
33 1 30 30 85 71

3M AsiaPacific

9 Tagore Lane
Singapore 787472
65-6458611

3M Australia/New Zealand

9 - 15 Chilvers Road
Thornleigh, NSW 2120
Australia
1300 363 878

3M Canada

P.O. Box 5757
London, Ontario N6A4T1
Canada
1-800-563-2921

3M Latin America

Avenida Santa Fe 55, Santa Fe
C.P. 01210 Mexico City
Mexico
5255-5270-0400

3M Japan

31-1, Tamagaradai, 2-Chome
Setagaya-Ku, Tokyo
158-8583, Japan
81-3-3709-8289