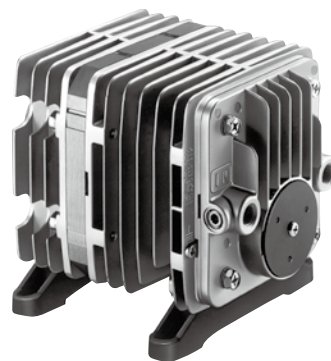
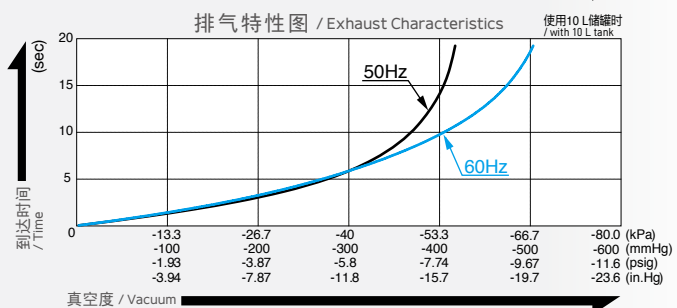
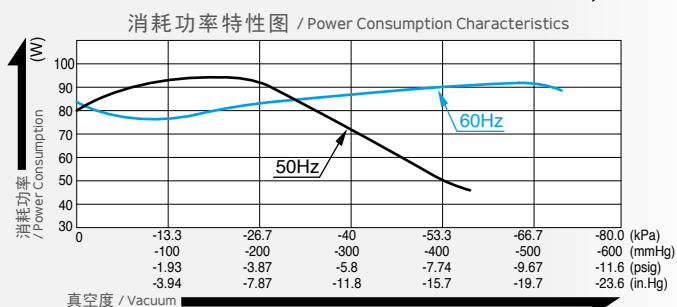
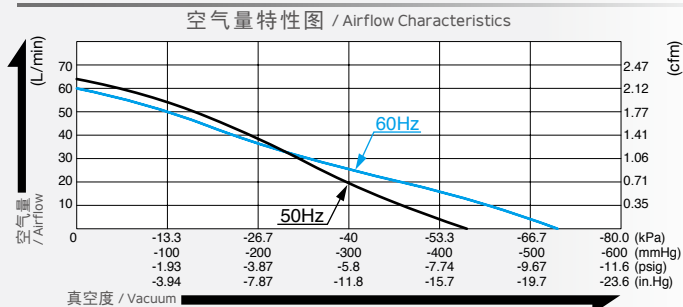


真空泵 / Vacuum Pump

型式 VP0940



空气量和消耗功率 / Airflow & Electric Current



※ 特性图只是参考值，并不是保证值。
/The characteristic charts are for reference only and are not guaranteed.

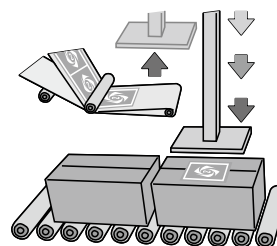
规格 / Specifications

| | | | |
|--------------------------------|--|---------------------|---------------------|
| 达到真空度* / Attainable Vacuum | -53.3 kPa (-400 mmHg) -533 mbar -15.7 in. Hg | | |
| 吐出空气量 / Free Air Displacement | 60 L/min 2.12 cfm | | |
| 额定电压 / Rated Voltage | 100 V AC | 115 V AC | 230 V AC |
| 消耗功率 / Power Consumption | 95 W | | |
| 额定频率 / Rated Frequency | 50 Hz / 60 Hz | 60 Hz | 50 Hz |
| 耐用时间 / Rated Performance | 10,000 小时 / hours | | |
| 吸入口尺寸 / Inlet | ISO Rc 1/4 (内螺纹 / internal thread) | | |
| 吐出口尺寸 / Outlet | ISO Rc 1/4 (内螺纹 / internal thread) | | |
| 额定时间 / Duty Cycle | 连续 / Continuous | | |
| 线圈绝缘等级 / Coil Insulation Class | 相当于 B 类 / UL 规格品 / B or its equivalent / UL | | |
| 安装尺寸 / Mounting Dimensions | 102 (L) x 130 (W) mm 4-1/64" (L) x 5-1/8" (W) | | |
| 本体重量 / Weight | 4.55 kg 10.0 Lbs | | |
| 导线长度 / Leadwire Length | 300 mm 11-13/16" | 300 mm 11-13/16" | 320 mm 12-19/32" |

※ 高于 -53.5kPa 运转时需要在进气管路上加装一个放气阀或泄压阀。
/ Operations at higher than -53.5kPa need an additional leak valve or relief valve on the inlet piping.

用途例 / Application Examples

贴标机 / Label Sticking Machine



外形及安装尺寸图 / Dimensional Outline Drawing (单位 / Unit : mm)

