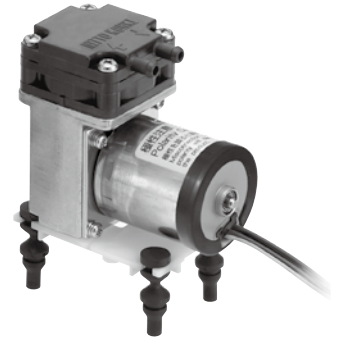


压缩泵 & 真空泵 / Compressor and Vacuum Pump

型式 DP0110-X3

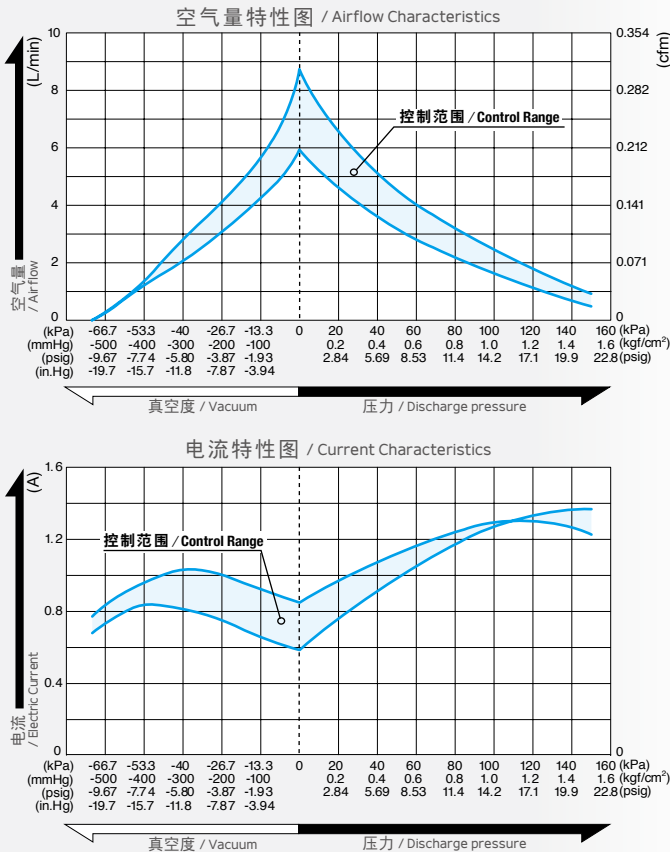
For PWM control



采用无炭刷马达
/ Brushless DC Motor
(12 V DC)

兼用 / Dual Type

空气量和消耗功率 / Airflow & Electric Current



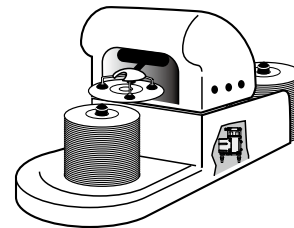
※ 特性图只是参考值，并不是保证值。
/ The characteristic charts are for reference only and are not guaranteed.

规格 / Specifications

达到真空度 / Attainable Vacuum	-66.7 kPa (-500 mmHg) -667 mbar -19.7 in.Hg
吐出空气量 / Free Air Displacement	7.5 L/min 0.265 cfm
额定电压 / Rated Voltage	12 V DC
最高压力 / Maximum Pressure	150 kPa (1.5 kg/cm ²) 1.5 bar 21.3 psig
最大电流 / Maximum Current	1.4 A 以下 / or less
额定时间 / Duty Cycle	连续 / Continuous
耐用时间 (MTTF) / Rated Performance (MTTF)	5,000 小时 / hours
控制 (PWM) / Control (PWM)	2.5 - 5 V, 15-25 kHz, 占空比 / Duty cycle 80 - 100%
吸入口尺寸 / Inlet	φ6 mm (外径) 直管接头 / 6 mm O.D. straight barb
吐出口尺寸 / Outlet	φ6 mm (外径) 直管接头 / 6 mm O.D. straight barb
线圈绝缘等级 / Coil Insulation Class	相当于 A 类 A or its equivalent
安装尺寸 / Mounting Dimensions	50 (L) x 30 (W) mm 1-31/32" (L) x 1-3/16" (W)
本体重量 / Weight	0.30 kg 0.66 Lbs
导线长度 / Leadwire Length	180 mm 7-3/32"

用途例 / Application Examples

CD、DVD 媒介印刷机 (搬送)
/ Vacuum pick up and place devices for CD & DVD



外形及安装尺寸图 / Dimensional Outline Drawing (单位 / Unit : mm)

橡胶隔振脚安装尺寸:

板厚: t=2mm,
孔径: φ6±0.1mm
(橡胶隔振脚为产品附件)

Mounting Dimension of Insulated Rubber Feet:
Plate thickness : t = 2 mm
Hole diameter : φ6±0.1 mm
(Rubber feet come with the product as accessories.)

