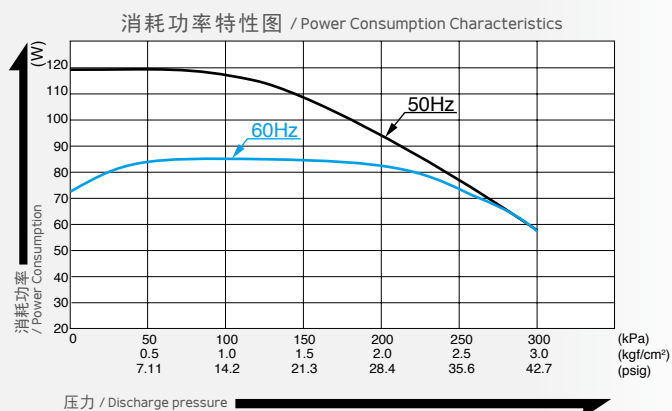
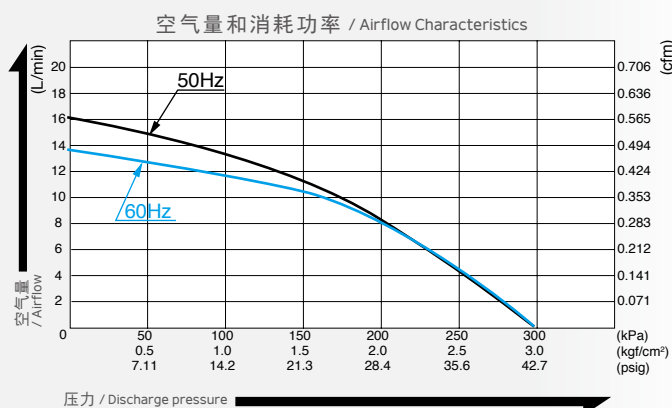


压缩泵 / Compressor

型式 AC0920

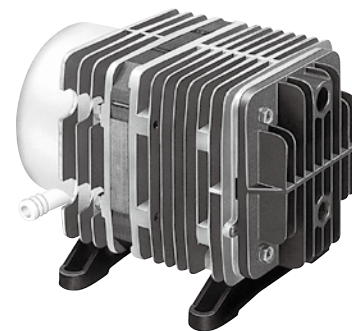
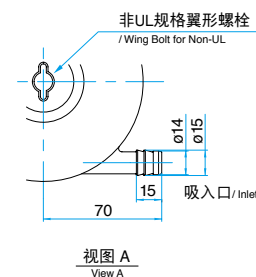
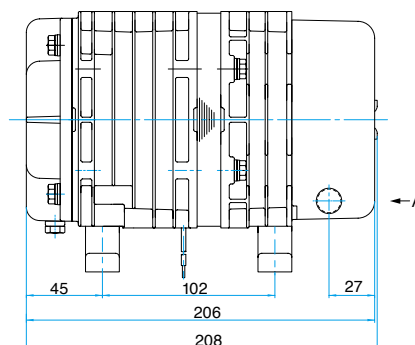
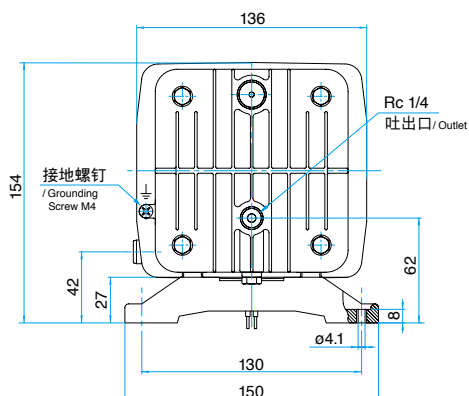


空气量特性图 / Airflow & Electric Current



※ 特性图只是参考值，并不是保证值。
/The characteristic charts are for reference only and are not guaranteed.

外形及安装尺寸图 / Dimensional Outline Drawing (单位 / Unit : mm)

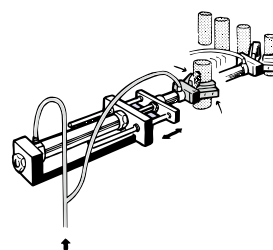


规格 / Specifications

额定压力 / Rated Pressure	200 kPa (2.0 kgf/cm ²) 2.0 bar 28.4 psig		
吐出空气量 / Rated Airflow	8 L/min 0.283 cfm		
最高压力 / Maximum Pressure	300 kPa (3.0 kgf/cm ²) 3.0 bar 42.7 psig		
额定电压 / Rated Voltage	100 V AC	115 V AC	230 V AC
消耗功率 / Power Consumption	100 W / 81 W	81 W	100 W
额定频率 / Rated Frequency	50 Hz / 60 Hz	60 Hz	50 Hz
耐用时间 / Rated Performance	3,000 小时 / hours		
吐出口尺寸 / Outlet	ISO Rc 1/4 (内螺纹 / internal thread)		
额定时间 / Duty Cycle	30 分钟		
线圈绝缘等级 / Coil Insulation Class	相当于 E 类 / E or its equivalent		
安装尺寸 / Mounting Dimensions	102 (L) x 130 (W) mm 4-1/64" (L) x 5-1/8" (W)		
本体重量 / Weight	5 kg 11 Lbs		
导线长度 / Leadwire Length	300 mm 11-13/16"	300 mm 11-13/16"	150 mm 5-29/32"

用途例 / Application Examples

气缸 / 气动卡盘 / Air Cylinder/Chuck Driver



检漏机 / Leakage Tester

