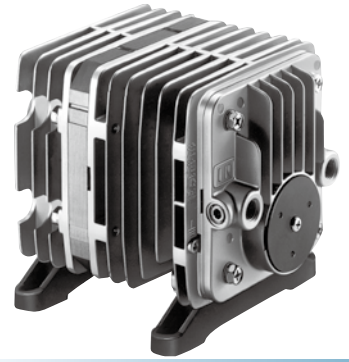


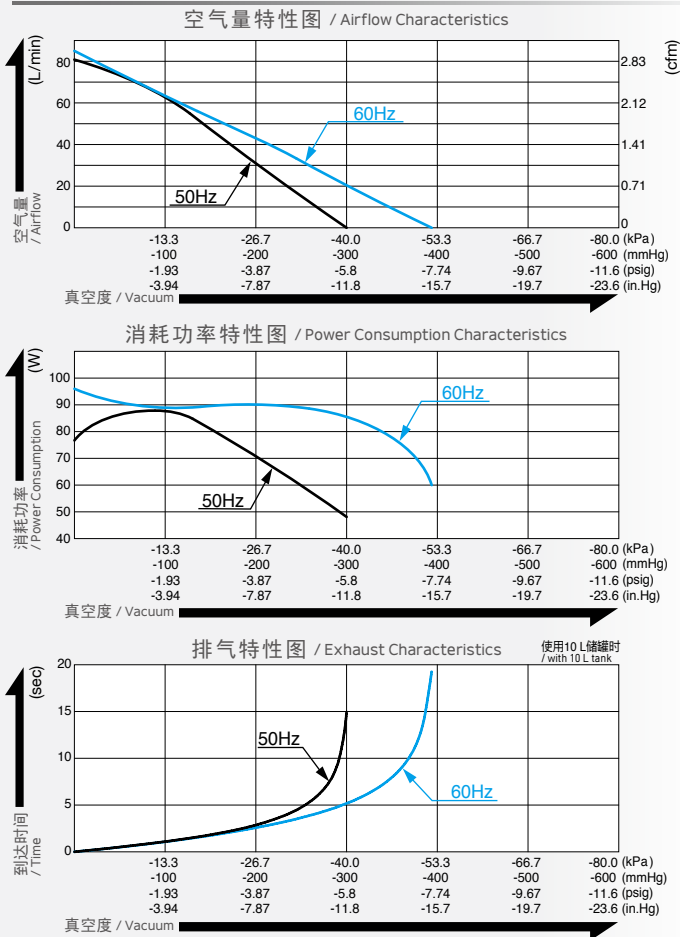
真空泵 / Vacuum Pump

型式 VP0925A

120 V/230 V 定制 / is made to order



空气量和消耗功率 / Airflow & Electric Current



※ 特性图只是参考值，并不是保证值。
/The characteristic charts are for reference only and are not guaranteed.

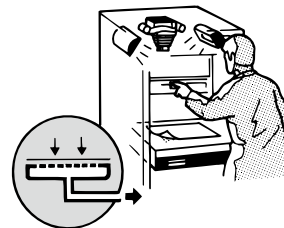
规格 / Specifications

达到真空度* / Attainable Vacuum	-33.3 kPa (-250 mmHg) -333 mbar -9.84 in. Hg		
吐出空气量 / Free Air Displacement	80 L/min 2.83 cfm		
额定电压 / Rated Voltage	100 V AC	115 V AC	230 V AC
消耗功率 / Power Consumption	88 W / 95 W	95 W	88 W
额定频率 / Rated Frequency	50 Hz / 60 Hz	60 Hz	50 Hz
耐用时间 / Rated Performance	10,000 小时 / hours		
吸入口尺寸 / Inlet	ISO Rc 1/4 (内螺纹 / internal thread)		
吐出口尺寸 / Outlet	ISO Rc 1/4 (内螺纹 / internal thread)		
额定时间 / Duty Cycle	连续 / Continuous		
线圈绝缘等级 / Coil Insulation Class	相当于 E 类 / E or its equivalent		
安装尺寸 / Mounting Dimensions	102 (L) x 130 (W) mm 4-1/64" (L) x 5-1/8" (W)		
本体重量 / Weight	4.5 kg 9.9 Lbs		
导线长度 / Leadwire Length	300 mm 11-13/16"	300 mm 11-13/16"	320 mm 12-19/32"

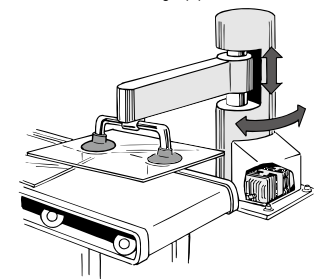
※ 高于 -33.3kPa 运转时需要在进气管路上加装一个放气阀或泄压阀。
/ Operations at higher than -33.3kPa need an additional leak valve or relief valve on the inlet piping.

用途例 / Application Examples

胶片洗印设备 / Microfiche Camera



真空吸附材料搬运
/ Vacuum Material Handling Equipment



外形及安装尺寸图 / Dimensional Outline Drawing (单位 / Unit : mm)

